

LAKE ROTOITI COMMUNITY ASSOCIATION INC.

NEWSLETTER WINTER 2014

CHAIRPERSON'S REPORT JULY 2014

It has been a busy few months. We have two issues of direct concern to our members and lakeside residents and we have been keeping abreast of changes (of which there have been several) over the last months.

LAKESIDE PROPERTY OWNERS AND RDC'S PROPOSED DISTRICT PLAN

We have had formal meetings with the Planners at RDC with regard to their proposed District Plan and I must acknowledge the enormous amount of work that Derek Nolan has put in on behalf of all of us who are affected by the proposed Plan. His input has been invaluable in directing all parties to the anomalies and inadequacies that have been proposed and the responsible re-direction of these issues. July 22nd sees submitters coming before the three Commissioners assigned to hear submissions on the District Plan; Karen Hunt, Glenys Searancke and Janet Wepa; all of whom are RDC Councillors. One hopes that sense will prevail. Rotorua is, unfortunately, an area of low growth and the need to recognise long term investment by property owners within the area and to encourage same is paramount.

EASTERN ROTOITI AND ROTOMA SEWERAGE SCHEME

Our Association has been involved in meetings that have been held with iwi, other interested parties and representatives from RDC, BOPRC and the Department of Health. We have attended workshops, hui and hiko; all of which have been most informative. Ian McLean has chaired the independent committee that is working towards finding the best solution for this scheme. Please

see the notice of meetings on page 2. I hope to see many members there at the meeting on 3rd August, at which I will be co-chair. It is most important that the best scheme is selected and that it is affordable to those members of our community who will benefit from same. There is funding from the Crown through the Ministry of the Environment and Ministry of Health that is dependent on a scheme being agreed to be put forward by September this year.

RESOURCE CONSENT APPLICATION NUMBER 60739 CHANGE 2: ROTORUA DISTRICT COUNCIL

On 7 July 2014, a decision was made on this application by the Hearing Commissioners.

It was resolved that the Regional Council:

Grants application number 60739 C02, to change the conditions of consent 60739.

The Hearing Commissioners have accepted the change in the Resource Consent for the Whaka Forest which will be in place until 2019. A common sense approach they said.

This gives us time to come up with a sensible option to the current scheme. I believe that with the parties involved in this process such an option will be found.

It is very encouraging to see how RDC is now working in close proximity with the community to resolve matters.

HILARY PRIOR | (CHAIRPERSON)

LRCA@XTRA.CO.NZ

LRCA WEBSITE: www.rotoitico.nz

WHICH SEWERAGE SCHEME? EAST ROTOITI AND LAKE ROTOMA

Rotorua District Council (RDC) will shortly be seeking community views on options for sewage from East Rotoiti and Lake Rotoma communities.

The area covered is from Curtis Rd along SH 30 to the Rotoma Hills and including side roads. Kennedy Bay and Otautu Bay are not included.

In 2012 the attempt by RDC to obtain resource consent for its chosen scheme failed in the Environment Court.

RDC then made a fresh start with iwi and community groups. A steering Committee (RRSSC) was set up with Ian McLean as independent chair. Iwi, community organisations, local and central government authorities have worked closely together on the Committee.

The key objectives are better lake water quality and protection of public health. At the same time respect must be shown for cultural values and community wishes.

A Technical Advisory Group has considered a wide range of options to deal with sewage in the area. A short-list of options has been determined. An evaluation of these will be publicised in mid-August.

It will also then be on the RDC website www.rdc.govt.nz.

Meetings (hui) will be held to provide information and to hear views from iwi and other community groups. Details are:

- Saturday 26 July 2014 at Punawhakareira (Uenuku) Marae, Rotoiti, at 10.00 am
- Sunday 27th July 2014 at Rotoma Fire station, at 10.00am
- Sunday 3 August 2014 at Rotoiti Clubrooms at 10.00 am (Co-Chaired by Hilary Prior of LRCA)

Please tell your neighbours about these meetings.

The community will also be able to provide input through the RDC website or in writing.

The RRSSC will then make a recommendation to RDC on a preferred option. In order to retain the \$4.46m subsidy from the Ministry of Health, RDC must select a preferred option by 30 September.

The future of your community and your lakes are at stake. You are invited to become involved.

CONTACTS: IAN MCLEAN 021 435 845
GREG MANZANO 07 351 8204

COMMUNITY BOARD MEETING DATES 2014

7th August	7 pm	Buried Village, Lake Tarawera
18th September	1.30 pm	RDC, Committee Room 1
6th November	7 pm	Okareka Community Hall, Loop Road
18th December	1.30 pm	RDC, Committee Room 1

HON TODD MCCLAY MP FOR ROTORUA

Across Rotorua we are starting to see real progress both in policy and in the improving quality of all our lakes. In the past year Lake Rotoiti's water quality target has been met for the first time and is the best since monitoring began in 1991.

This is positive news for Rotoiti and follows some announcements by the Government recently to continue this good work.

Last week new clear guidelines were announced surrounding the management of our lakes and rivers. Rotorua is already well placed to take these on board compared to other districts across the country.

The new guidelines would encourage communities to work together to decide what's best for its region – based on the regions specific economic and environmental circumstances. This means the Rotoiti community will have a say too!

This latest initiative will work hand in hand with the number of

clean-up projects happening in Rotorua including the reallocation of \$24 million of government funding to continue the clean-up of Lake Rotorua. This funding will be used to make important changes in the Rotorua catchment including the establishment of a nitrogen trading scheme to reduce nitrogen flows from the land into Lake Rotorua. It builds on the Oturua Agreement signed by BOP Regional Council, Rotorua farmers and me last year.

I look forward to continuing to work with our communities, including Lake Rotoiti residents, to return our waterways and communities to better health.

If you have an issue you'd like to raise with me, I would welcome the chance to meet with you. Should you wish to make an appointment, please contact my Rotorua office on (07) 348 5871 or email me directly at rotorua.mp@national.org.nz. My staff and I would love to hear from you.

Lakes WATER QUALITY Society

The downside of improving water quality is increased weed growth. In recent months a new weed harvester has been purchased, commissioned and is now operational. Initially the focus was to harvest for the nutrient targets set for Lake Rotoehu. Once achieved the harvester was briefly relocated to Okawa Bay to deal with troublesome hornwort which was interrupting navigation of the waterways and then producing a sickening smell and unsightly mess around the edges of the bay as it lay rotting on the beaches. We understand the harvester has done a good

job in cleaning up.

The issue for our Society is that lake weed is not going away. It is likely to get worse as the lakes improve in clarity from their restoration programmes. Given the complexities and issues associated with weed control LWQS will have a symposium on lake weed and its management in March/April 2015.

A second issue is that the environmental impact of wallabies in lake catchments like Okataina, Rotoiti, Tarawera and Okareka is seriously underestimated. The damage to

the understory of the forests is significant. We need a coordinated approach to address the wallaby issues and fund studies to incorporate and validate the need for significant eradication programmes around these lakes.

Steady progress is being made in the Lake Rotorua Stakeholder Advisory Group (StAG) but many of the hard issues are still to be addressed. The group are focussing on:

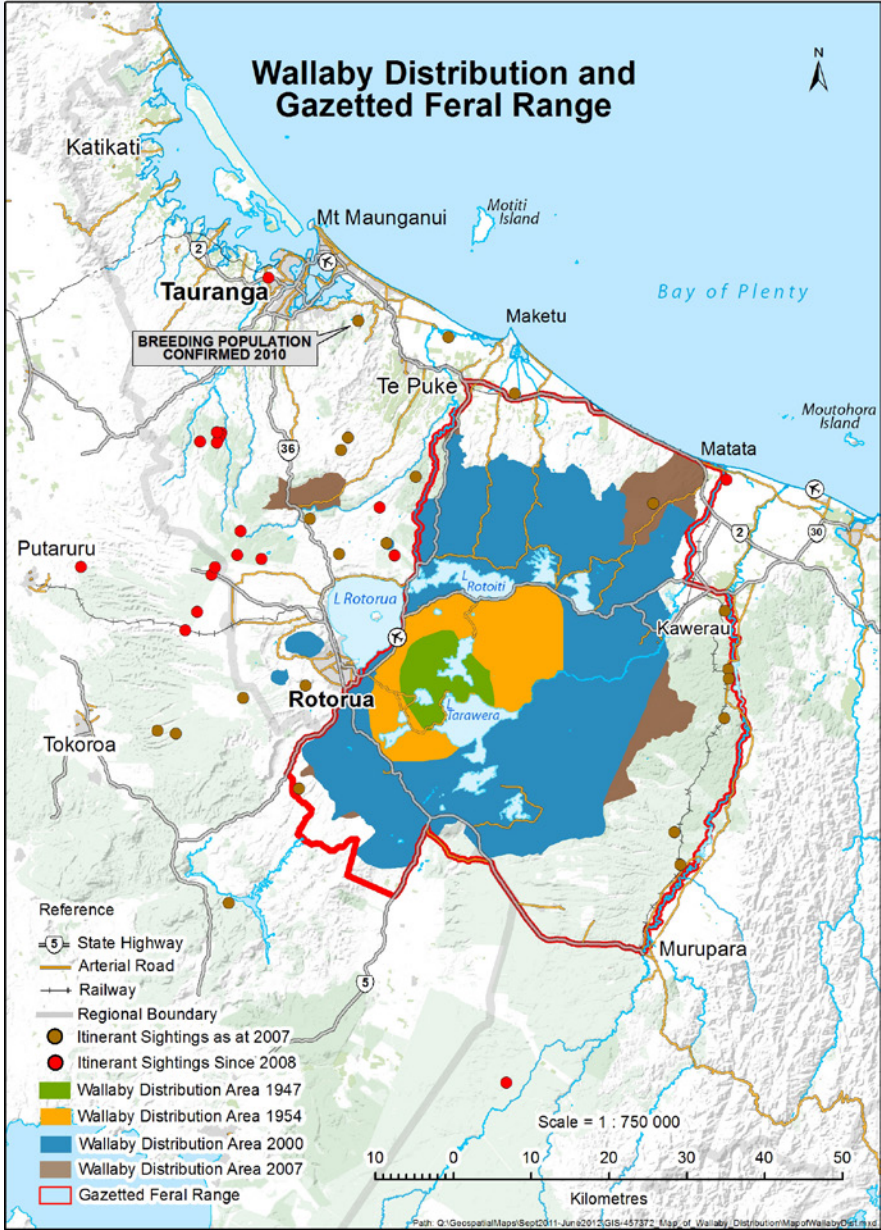
- How to define managed reduction of farm nitrogen losses and how that might relate to resource consent activity status and term of consent
- How to use the Overseer nutrient budget model
- Supporting communication on the rules and incentives package
- Refining the land Technical Advisory Group concept

In April this year the government confirmed the reallocation of its funds from in-lake to on-land catchment projects. This is a very important outcome which will contribute significantly to the nutrient reduction programmes and targets set for Lake Rotorua. The work done by Todd McClay to support this reallocation is greatly appreciated by our community.

The Rotoiti diversion wall consent expires in October 2017. We expect it to be a 'no brainer' to renew the consent and we will be doing everything we need to ensure it happens.

JOHN GREEN | CHAIRMAN, LAKESWATER QUALITY SOCIETY

Ian Maclean has published an article on LWQS for Solutions, a non-profit and online publication devoted to showcasing bold and innovative ideas for solving the world's integrated ecological, social and economic problems. This article makes very informative reading:
www.thesolutionsjournal.com/node/237169



BAY OF PLENTY REGIONAL COUNCIL NEWS:

LAKES PROGRAMME CONSULTS ON NEW RULES

The Rotorua Te Arawa Lakes Programme is consulting on draft rules to reduce nitrogen losses from pastoral land in the Lake Rotorua groundwater catchment.

Key sector stakeholders have worked with the programme partners to develop and agree on a framework for the rules and there will be meetings with rural sector groups and iwi and a public open day. People will have the opportunity to provide feedback which will be used to revise and amend the rules before formal notification in 2015.

The rules are likely to affect most landowners with properties over 2 hectares in the groundwater catchment.

There are currently rules in place to prevent increases in nitrogen and phosphorus loss, known as "Rule 11", but this does not require reductions. The new rules will set nitrogen loss limits for properties which landowners will need to achieve in order to meet community expectations for Lake Rotorua.

Support and advice will be available through the programme, including funding for landowners to develop plans for nitrogen loss. Landowners will also be encouraged to go beyond those limits and consider land use alternatives through an incentives scheme which is in the process of being set up and funding is available for gorse reduction.

The lakes programme is a joint partnership of Rotorua District Council, Bay of Plenty Regional Council and Te Arawa Lakes Trust. Work done to date has improved water quality in Lakes Rotorua, Rotoiti and Rotoehu and water quality is stable in Rotoma, Okareka, Tikitapu and Rerewhakaaitu.

However further nutrient reductions are needed for Lake Rotorua. Phosphorus reduction is occurring through in-lake interventions in the short term while further nitrogen and phosphorus losses will be achieved through new rules by 2032.

The public Open Day as part of the consultation on the rules is being held on Wednesday 30 July at the Novotel from midday to 7pm. Briefing sessions are also being held by Te Arawa Lakes Trust, Federated Farmers, Dairy NZ and Beef + Lamb for their members.

Public consultation on the draft rules end 14 October 2014. Feedback will be reviewed and analysed by the Regional Council and worked through with the Stakeholder Advisory Group. The revised rules will be provided to the Regional Council in December with the intent to notify proposed rules in March 2015.

INCENTIVES FUND

Cabinet recently approved a re-allocation of funds within the Rotorua Te Arawa Lakes Programme, enabling an incentive scheme to be established to support landowners affected by the new rules.

The re-allocation of \$24 million in Government funding means a proposed \$48 million incentive scheme, to help landowners in the Lake Rotorua catchment with the cost of land use management and land-use change needed to reduce land-use nutrient loss, can now go ahead. The incentive scheme will also receive funding from the Bay of Plenty Regional Council.

Approval from Central Government was required as the re-allocation is a change to the deed funding agreement which saw the Crown contribute half of the \$144 million needed to help restore four priority lakes in the Rotorua region.



INNOVATION CHALLENGE

No winner was found in a competition run as part of the lakes programme and aimed at finding viable alternative land uses for landowners in the Lake Rotorua catchment.

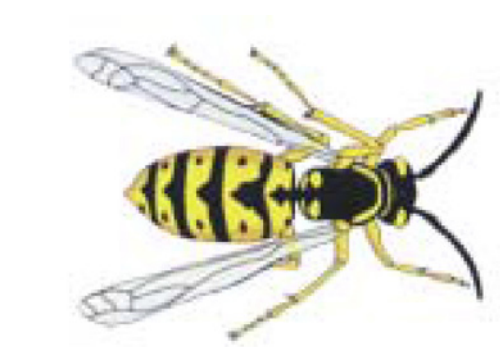
Several entries for the Innovation Challenge were deemed to have potential but the judging panel found they did not address all key components of the competition. Entries needed to provide for long-term, measurable nitrogen reductions as well as provide research and analysis to show the business case detailing the solution's economic viability.

The submitted entries will be used to start a toolkit of alternative land-use options for landowners as the programme is committed to helping find solutions for nutrient reductions. The programme will continue to work with the community, farmers, industry and research institutes to provide options for landowners.

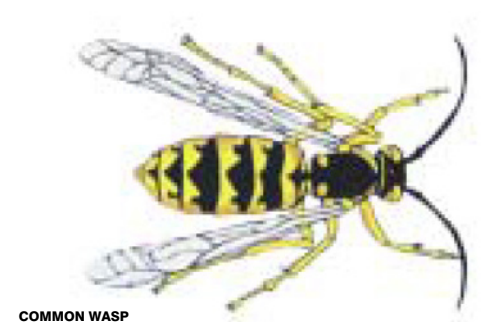
WANT TO KNOW MORE ABOUT THE LAKES PROGRAMME?
GO TO www.rotorualakes.co.nz

REPORT ABOUT WASPS

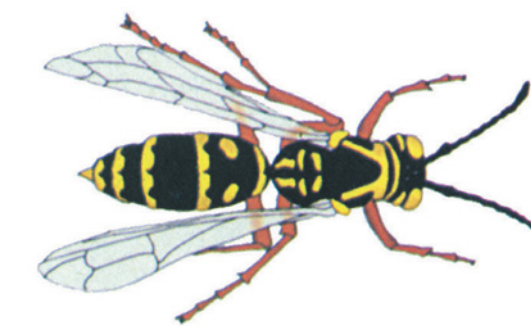
This last summer appears to have been a particularly bad season for wasps. Mostly the problems have been caused by either German Wasps or Common Wasps.



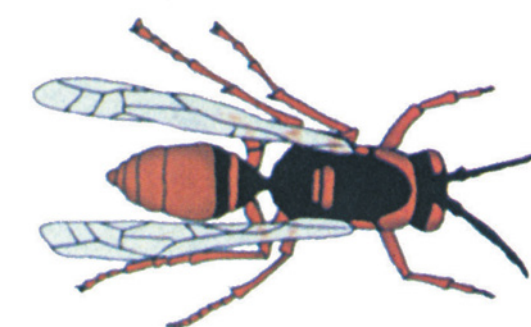
GERMAN WASP



COMMON WASP



ASIAN PAPER WASP



AUSTRALIAN PAPER WASP

GERMAN WASP *Vespa germanica*

The German Wasp has probably been in New Zealand since the late 1800's, but they were not seen in large numbers until around the 1940's. It is slightly larger than a honey bee with a black head and thorax. The abdomen has yellow and black stripes, with black spots separate from the central black stripes.

COMMON WASP *Vespula vulgaris*

The Common Wasp arrived more recently than the German Wasp but is already widespread. This wasp is very similar to the German wasp, but can be identified by not having separate black dots on its abdomen. These dots appear to be fused to the black rings on the abdomen.

While there are 4 species of wasp in our region (Asian paper wasps and Australian paper wasps being the other two species) German wasps and common wasps present the greatest danger to public health, they attack bee hives and compete with and prey on native fauna.

German and Common wasps normally nest underground, though German wasps in particular will sometime use hollow trees and walls and roofs of buildings. Their nests can be really hard to find, especially in bush or scrub country.

To locate their nests, look for wasps' flight paths at dawn or dusk on a warm sunny day when large numbers of wasps will be leaving or returning to the nest. A plate of cat food can attract wasps. As they land sprinkle them with flour to make them more visible. Follow the wasps as far as you can, then repeat the process until you find the nest. Be very careful as you approach the location of the nest.

ASIAN PAPER WASP *Polistes chinensis*

Asian paper wasps were first discovered in North Auckland in 1979 and have quickly spread throughout the northern North Island. They are slightly smaller than the German and Common wasps.

The Asian paper wasp is also yellow and black striped. Paper wasps fly with their long legs dangling beneath their bodies and this easily identifies them.

AUSTRALIAN PAPER WASP *Polistes humulus*

The Australian Paper Wasps have been in New Zealand since the 1880's. They are smaller than the Asian paper wasp and have a reddish-brown colouration.

The paper wasp species build elaborate 'paper mache' nests. These are generally bell shaped with hexagonal cells. Nests can be suspended from branches of shrubs or under the eaves of buildings. They hang more or less vertically, so that rain or dripping water cannot enter open cells. These can usually be easily controlled by using household fly spray. The nest can be removed by placing a plastic or paper bag over the nest and clipping it off into the bag. Seal the bag and dispose of it in the rubbish.

The link www.boprc.govt.nz/media/322201/pa03-internet.pdf has sound advice on how to deal with German and Common wasp nests, along with suggested products and details of pest control services that can be called upon to assist with removal of such nests.

PETER BENTLEY

Water fowl contamination in Lakes Rotoiti and Rotorua is being largely ignored by the two authorities who could actually do something about it. I read an article in our Daily Post 26.6.14 stating twenty years ago studies showed 107 tonnes of bird droppings per year. This equates to 5 tonnes nitrogen and nearly 2 tonnes of phosphorus going into Rotorua. With the huge increase of Canadian geese now on Rotoiti I would imagine a similar quantity is now landing in Rotoiti. I have seen good grazing paddocks turn from green grass to mud in under 7 days due to an infestation of Canadian Geese. In fact if you are a boatie, pull up at a floating wetland and observe the huge number of waterfowl residing on these structures you then realise the original purpose of the construction of these wetland by way of trapping nitrogen is totally negated. I believe we have to lobby DoC and BOPRC to act very quickly to rectify this.

PETER BENTLEY
ROTORUA DISTRICT COUNCILLOR AND LAKES COMMUNITY BOARD

ROB KENT

Council spends considerable sums cleaning up lake weed following major storms. The two most recent big storms have cost council some \$80,000 to clear up some 60,000 tonnes of weed debris, primarily using diggers working on accessible areas of the shore, and in the shallows, which is hardly a model example of modern mechanised efficiency. The weed debris, once dried, ends up being used as compost. Preliminary calculations indicate that the removal of this amount of weed has in fact removed something like 5 tonnes of N, and a considerable amount of P from the lakes concerned. This has raised the issue as to whether year-round water based weed harvesting could be used as a cost effective means of reducing lake nutrient levels; improving lake accessibility, and as a means of reducing future storm clean-up costs all in one go. Council staff will be looking to hold discussions with BOPRC staff to see if there is any merit in a joint initiative based on this idea.

ROB KENT
ROTORUA DISTRICT COUNCILLOR

WEST ROTOITI VOLUNTEER FIRE BRIGADE

Thanks to the generosity of members of the public, the Wooden Boats Association, the Lake Rotoiti Charitable Trust, LRCA, and most recently the NZ Community Trust, we are delighted to confirm that we now have enough funds secured to pay for the extension of the fire station to house our new fire boat.

The building permit is currently with the Council and it is hoped that permission to start construction will be received shortly.

I would like to sincerely thank everybody who has supported this project. It has taken a while to get where we are now.

Almost exactly a year to the day after the fire boat has been put in service we were called out to a serious rescue at the Manupirua Hot Pools, and at that time, I think, the boat has paid for itself...!

Thanks again to all involved and I will keep you posted on progress in the next publication.

ANDI UHL

DEPARTMENT OF CONSERVATION Facts about New Zealand pigeon



NEW ZEALAND PIGEON/KERERU, TE AWANGA, HAWKE'S BAY

There are two species of native pigeon, the New Zealand pigeon (*Hemiphaga novaeseelandiae*) known to the Maori as *kererū*, or in Northland as *kūkū* or *kūkupa*, and the Chatham Islands pigeon (*Hemiphaga chathamensis*) or *parea*.

The *parea* is found mainly in the south-west of Chatham Island. While there are only about 500 *parea* left, the species has made a remarkable recovery over the past 20 years, due to habitat protection and predator control.

Two other kinds of native pigeon became extinct on Raoul Island and Norfolk Island last century, probably due to hunting and predation.

Since the extinction of the moa, the native pigeon is now the only seed disperser with a bill big enough to swallow large fruit, such as those of *karaka*, *tawa* and *taraire*.

It also eats leaves, buds and flowers, the relative amounts varying seasonally and regionally, e.g. in Northland the birds eat mostly fruit.

Kererū are large birds and can measure up to 51 cm from tail to beak, and weigh about 650g.

Long-lived birds, they breed slowly. Key breeding signals are spectacular display flights performed mainly by territorial males. They nest mainly in spring/early summer producing only one egg per nest, which the parents take turns to look after during the 28-day incubation period.

The chick grows rapidly, leaving the nest when about 40 days old. It is fed “pigeon milk”, a protein-rich milky secretion from the walls of the parents’ crops, mixed with fruit pulp. When much fruit is available, some pairs of *kererū* will have a large chick in one nest and be incubating an egg in another nearby. Fledglings spend about two weeks with their parents before becoming fully independent, but have remained with their parents during autumn and winter in some cases.



EMERY, SAMUEL HOROUTA 1885–1967

Ngati Pukeko, Ngati Maniapoto and Ngati Mahuta; labourer, farmer, rugby player, storekeeper, carrier, businessman, local politician.

This biography was written by Cushla Parekowhai and John Himiona Hunia and was first published in the Dictionary of New Zealand Biography Volume 4, 1998

Samuel Horouta Emery was born, probably in 1885, at the foot of Kakepuku in a small Maori settlement near Te Awamutu. His father was Samuel Hoera Joyce, a bushman, of Ngati Mahuta; he also had kinship ties with Ngati Pukeko. Sam's mother was Waimarama Emery of Ngati Kahu. A thin youth with blondish red hair, Sam favoured his European grandfather's looks. As his parents could not afford to keep him, Sam was sent away to be raised by an uncle. Even then he knew hunger: often he and his cousin Tom would herd the family cow into the swamp and drink milk directly from the udder. This experience of poverty was to motivate him for the rest of his life.

When he was 12 Sam Emery ran away from home to find his fortune in the Coromandel gumfields. At that time he spoke Maori only. He had never been to school and could neither read nor write, but quickly acquired some arithmetic in order to avoid being cheated by unscrupulous gum dealers and traders. By the time he was 18 Emery had managed to save enough money to marry a young woman from Rotoiti, Kataraina Te Urumahue Katene, the daughter of Hona Whakataki Katene of Ngati Rongomai and Aneta Irihana Rewiri of Ngati Te Rangiunuora. Sam and Kataraina were married probably in 1903 or 1904 at Tapuakura, Lake Rotoiti; they had three sons and three daughters. Initially they lived at Piropiro. It was here that Sam assisted his in-laws in establishing the house Rakeiao, and where he first became interested in the systematic development of marginal Maori land.

Emery then worked as a labourer for the Taupo Totara Timber Company helping to construct the Putaruru–Mokai railway. His extraordinary capacity for hard physical work soon paid off and by 1909 he was able to build his own house at Te Tuarae on the shores of Lake Rotoiti. At the same time, he began to break in the property directly behind his house. As the land belonged to his wife's people, he negotiated lease agreements which would allow him to clear the trees and develop good pasture. He then stocked the property with sheep and cattle. His rigorous selective breeding programme combined with regular on-site stock sales ensured that his farms ran only top-quality animals.

Emery also worked as a casual road worker building the main highway to Whakatane. Brief stints navvying on the Okataina and Manawahe roads then led to a spell tree planting in Waipa. He also won a contract to transport young pine trees from the nursery to the planting sites in the forest. For an extra shilling a day, he would hitch up his own horse and dray and provide the cartage service himself.

In spite of the demands of his entrepreneurial activities, Emery still managed to find time to play rugby. Every Saturday during the season he would get up before dawn and ride the long miles to Rotorua for club games in the afternoon. He distinguished himself as a forward playing club rugby for Waipa, Kahukura and Rotoiti. He also played representative rugby for Bay of Plenty and was in later years a selector for the Bay of Plenty, Rotorua and Arawa teams.

In 1911 Sam Emery opened a small shop beside his home in Rotoiti. Staffed mostly by Kataraina, their children and other relatives, Emery's general store did a steady trade in staples like flour, tea and sugar. For his regular customers Emery could always be relied upon to offer a few Maori delicacies such as mutton birds. He also supplied the shop with meat butchered at his own killing sheds; the carcasses came from Emery's farm.

The grocery business was extremely successful and Emery ploughed the profits into buying a double buggy so that he could increase the amount of stores carted from Rotorua. Not one to waste resources, he then began an informal weekend bus service charging local footballers a small cash fare in return for rides to their Saturday games. This enterprise, the beginning of the Emery Transport Company, was the first regular bus service to run between Rotoiti and Rotorua. Emery soon recognised the potential of the motor vehicle to his burgeoning cartage business and by 1917 he had a Ford truck parked alongside his horse-drawn dray. Later, three Buicks and a 25-passenger bus were added to the fleet.

Emery continued to lease and clear land for farming. In addition to dry stock he introduced a 20-head milking herd to the 300-acre property at Rotoiti. From then on fresh milk and other perishables were regularly available at his shop. At this time Emery was able to give up working on the roads and concentrate on his business activities. One of his profitable sidelines was the local manufacture of lead-lined coffins. In 1915 Emery became a partner in a sawmilling business and also bought a 34-passenger launch, Hikuwai. He was unable to operate the launch commercially until he had passed his skipper's ticket so he studied for the qualification; still unable to read or write, he learnt the examination questions and answers by rote. He relied heavily on the support of his family when dealing with the mountain of paperwork and bookkeeping generated by his many business interests. He was taught by Kataraina and her sister to make an acceptable signature. Ironically, Emery was also the licensed postmaster at Rotoiti during this period: it was the women of the household who took real responsibility for the sorting and delivery of the mail.

Emery realised that the key to Maori prosperity and growth lay in the acquisition of a large, self-sustaining economic base. He was an early supporter of Apirana Ngata's land development schemes. As an experienced farmer, he saw

the advantages of amalgamating small parcels of Maori land in order to form larger, more economic units. But he also knew how important it was for Maori shareholders in the incorporated blocks to retain control of the leases while at the same time actively investing in a programme of planned development which would increase the value of their original asset.

Emery held executive offices in the Okere, Tautara, Waione 3B8, Manupirua, Waitangi No 3 and Te Haumingi No 5 and No 13 incorporations. Having proved himself an able administrator, he then became chairman of Ngati Pikiao's very successful Rotoma Incorporation. Here he confirmed his reputation as a Maori businessman of ability and vision. From 1937 he was a member and deputy chairman of the Arawa District Trust Board and treasurer of the Waiariki District Council of Tribal Executives. He served on the Bledisloe Park and Lake Okataina scenic boards, was a member of the Maori Education Foundation for Rotoma and chaired the Rotoiti section of the Maori War Effort Organisation.

In later life Emery began to extend his business interests to include investments in real estate and commercial property. He organised the first subdivision of Gisborne Point in an ambitious lake-front housing development, and sold a valuable site in Rotorua. Emery was a staunch supporter of the New Zealand National Party, although ideology was less important than his view that those who made big money voted National and so would he.

In 1944 Emery was elected to the Rotorua County Council, where he served until his retirement in 1962. He was a tireless advocate for Maori and would often represent the interests of local tribes and hapu in their claims to the council. This intervention was valued by his Pakeha colleagues for the practical insights it gave into the complex nature of Maori land tenure and rating disputes.

Kataraina Emery died on 21 July 1959. As a memorial to her and her ancestors, Sam organised the construction of Te Rangiunuora, the large meeting house on the hill above his first little shop at Taurua Point. Te Rangiunuora was officially opened in 1960 by the prime minister, Walter Nash. Emery was also involved in the construction of other meeting houses in the Rotorua area.

Sam Emery was a member of the Rotorua Racing Club for over 30 years and bred his own horses. The first reasonably successful horse he raced was named Kaimoni (money eater). Then came the classy Miss Pictavia, who had a string of good finishes including a win in the Matamata Cup. Sam also bred the mare Tip o' Dawn, who through Hermes produced Van der Hum, the champion stayer and winner of the 1976 Melbourne Cup.

Sam Emery died at Rotorua on 20 April 1967 and is buried on a slope overlooking Lake Rotoiti in Te Whare-tai-nga-moko, the Emery family cemetery. He was survived by five of his six children.

ROTORUA LAKES COMMUNITY BOARD

With the first half of this year being the time District and Regional Councils put out Annual and District Plans for consultation it has been a busy period for the Community Board, as it has also been for the many voluntary, ratepayer and community groups around all our lakes. The Community Board tries to work closely with these groups to ensure we are all bringing to Councils' attention the issues and problems facing our Lakes communities.

This year shortly before submissions were due for the Annual Plan a group of concerned residents in the Mourea area brought to my attention the issue of speed and road noise along SH33. With the ever increasing amount of traffic between Rotorua and Tauranga (especially of heavy vehicles) there are real concerns around safety and noise through this popular area that stretches from Mourea to Okere Falls. The Community Board was able to help co-ordinate submissions on this issue from itself, LRCA and residents themselves to the Annual Plan.

As the Annual Plan has now been approved and released (it is available at www.rdc.govt.nz) I am please to report that RDC has responded by resolving to erect Engine Braking signs on SH33 to encompass the area from Mourea to Okere Falls (one of our requests in our submissions) and to lobby NZTA to both relocate the speed limit signs to ensure traffic has a chance to slow before entering Mourea, and to reseal SH33 in this area with a quieter surface material more suited to a built up area. RDC can only lobby on our behalf as speed limits and road sealing on SH33 are the responsibility of NZTA, not Council.

Aside from preparing submissions the Community Board's role is to engage with and present the concerns of our communities to Council and to help facilitate the discussions that ensue. While so far this electoral term our focus has been mainly on issues affecting Okareka and Tawarewa, we are also represented on the Steering Groups for both the Eastern Rotoiti-Rotoma proposed sewerage scheme, and the Rotorua Waste Water Discharge Options. Both these groups represent a new model of engagement for RDC with

communities. Through my direct involvement with the Rotoiti-Rotoma Steering Group I am really encouraged by the Community led approach of these groups, by RDC's willingness to listen, and most of all by the positive interaction between the communities and people themselves participating. Although there are many discussions on the best way forward what comes through clearly is the unanimous desire to protect and improve our environment and the quality of life for all around our lakes.

Water Quality issues came to the fore for Rotoiti after the April storms which pushed large masses of dead, and subsequently rotting, weed into many of our bays. In response to an apparent lack of interest by Regional Council a meeting was organised by residents of Okawa Bay which staff from BOPRC attended. Although budgets and policies seemed to preclude any action immediately they were helpful in suggesting approaches and the meeting was a constructive one overall in that it raised the wider issue of weed management. Following this, two members of the Community Board, Cr Kent and myself, met with RDC's CEO and the Infrastructure Services Manager to discuss how RDC could perhaps also contribute to finding solutions to this problem. Weed management is a complex issue, and one that yet again our communities are leading.

Under its new direction 'Tatou tatou – we together' RDC seems much more open to a Community-driven approach around discussing issues facing the district and developing solutions that reflect our aspirations, and they should be congratulated for this change in approach. If you have an issue that you'd like to discuss please feel free to contact me or any member of the Community Board. You can email me at rlcb@thomass.net or ph 0275-47-44-55. I'm more than happy to call you back, or pop round to see you.

PHILL THOMASS
ELECTED MEMBER, ROTORUA LAKES COMMUNITY BOARD

WEST ROTOITI CARE GROUP

There has been little group activity, we had a well publicised day cutting back the plantings along the Lake front, and in the locality of the control Gates. Individuals have sprayed the weeds, and mown areas of the grass that do not seem to be on the agenda of the mowing contractors. There have been no new plantings.

The walkway that links the end of Okere Road to State Highway 33 needs more attention than our group can manage. The bank down which the rafters slide their rafts is badly eroded, and during a rain event, loose dirt collects on the walkway leading across the Control Gates. A wooden wall is in danger of collapsing onto the pathway. This will block safe access to the crossing for pedestrians. Council has been notified by residents about this matter. When we have had discussions with them in the past, we have been told this is not their area of concern because it is adjacent to a State Highway.

There is a huge amount of activity in this area with kayakers, rafters, their supporters and visitors. Okere Falls has a high profile nationally and is a very vibrant addition to the Rotorua Area; tourism being the big earner for the local economy. Quite frankly the area needs some urgent attention. Last year when The World Rafting Championships were held in the Bay of Plenty, The Rotorua District Council erected a very attractive safety barrier on the North side of the Kaituna River at the end of the old Okere Road. This has proved very popular with locals and visitors for viewing Rafting and Kayaking activities on the river.

As a Care Group our main aim is to keep this area looking attractive and to control plantings and implement weed control, so this issue may not be seen as our area of concern ,but the area could be made safer and more attractive with some sensitive restoration by the Authorities.

OKERE FALLS STORE



Open 7 Days
SH33 Okere Falls RD 4 ROTORUA
Ph/Fax 07 362 4944

okerefallsstore.co.nz
STORE: 7am - 7pm every day
BEER GARDEN: Summer 7am - 9pm every day
Winter 7am - 9pm Fri & Sat, 7am - 7pm Sun to Thurs

GROCERIES
ITALIAN GROCERIES
GOURMET GROCERIES

WINE + BEER
ESPRESSO . CAKES
BRATWURST . PIES
ICECREAM . SOUP
SANDWICHES . .

ORGANIC PRODUCTS
LOCAL PRODUCTS
FRESH FRUIT + VEGES . . .

GIFT BOXES . CATERING
EAT-IN + TAKE-OUT
"HEAT AND EAT" MEALS

FRIENDLY STAFF
GREAT ATMOSPHERE
+ NICE COUCHES!

THE LIBRARY STORE
LIBRARY STORE:
Mon to Fri 7.30am - 6pm
Sat 9am - 4pm

LAKE ROTOITI WOODEN & CLASSIC BOAT ASSOCIATION

We have held the following successful events this year:

- 4th Jan - Poker Run - a great day ending with a BYO BBQ at Wairau Bay.
- 11th Jan - Dinghy and rowing day Wairau Bay
- 7th Feb - Pre-Classic and Wooden Boat Parade BBQ and get together at Lake Rotoiti Motor camp.
- 8th Feb - For the first time ever we had to postpone the Parade because of bad weather!
- 9th Feb - The weather was with us and we had a fabulous Parade and picnic thanks to all attendees.
- 19th April - Light Parade. Participants spent a great deal of time lighting up their boats. This event is obviously well enjoyed as evidenced by the number of fireworks being let off around the shore as the boats passed! Hopefully we can get more participants next year.

Wairau Bay

What a picture it is looking, the considerable investment in clearing and contouring we made last year has certainly paid off. On behalf of all our members, I thank the 'three old farmers' - Bill, Buzz and Marcus - not only for all the work they have done at Wairau Bay, but also especially for the great relationship they have established with the Trust Chairman, Mr Barnett Vercoe, which has resulted in the transformation of the area into the lovely bay it is today.

We acknowledge our gratitude to the Trust for allowing access to their land so this Bay can be enjoyed by all boaties.

Discussions have been held with the Trust over the state of the trees at the Bay. We have permission to remove any trees that we feel necessary (safety reasons) and replant as required. The plan in the Spring is to remove 1/4 to a 1/3 of the most dangerous trees and replant with suitable exotic specimen trees. So possibly, depending on the state of the existing trees, in four/five years' time they will all have been replaced.

The Trust has also given us permission to clear the foreshore to the east/left/port (hope you have got the location!) as you enter the Bay - this will give us better moorings for the larger boats as it is deeper water.

Publicity

We were joined at our Parade weekend from two members of NZCYA, Alan Houghton and Chris Miller. They both took numerous photographs which Alan published on his Waitematawoodies website. Great exposure! I am sure we will have more guests from Auckland next Parade weekend.

Don and Marilyn Jessop joined us for the weekend, they write books on 'kiwiana' and are in the process of compiling a book on 'Ladies of the Lake', boat owners will be asked to supply details of their boats to match all the photos Don and Marilyn took over the weekend.

Check our website www.woodenboatparade.co.nz

FRASER WILSON | COMMODORE

PIKIAO RUGBY LEAGUE CLUB NEWS



PIRIKAWANA TAIATINI AND DOUGLAS UNUWAI (CELEBRATE VICTORY OVER TAUPU PHOENIX)

LOOK AT THE TALENT WE HAVE WITHIN OUR COMMUNITY

Pikiao Under 13s: Coached by Thomas Wharerau and managed by Ana Maria TeWhata-Jacobs. Also successful in their grade, the skill and structure of their squad is testament to the coaching abilities and skills of Thomas Wharerau. The discipline and positive environment again due to Ana's strict regime. Players have also been selected for representative squads. Huge congratulations to Thomas and Ana, they are the 2014 BOPDRL Under 13s Representative Coach and Manager.

Pikiao Under 14s were successful in the Nines Tournament held early in the year. They took out the BOPDRL Nines competition. Coached by Hakopa Paul and managed by Rose Kingi, they have strived to produce a very successful squad and are still leading in the BOPDRL 2014 Internationals U14s competition. Many of their players have made the Town U14s and BOPDRL Representative team. Players such as Rangiteore Paul, Elijah Tua, Kingita Kingi are but a few who represented the Rangatahi NZ Maori RL Under 15s this year held at Puketawhero. Well done Boys!!!

Pikiao Under 16s The Pikiao RL Club are proud to announce the success of Hayze Perham. Not only was he named the player of the NZMRL Rangatahi Tournament, he also made the NZMRL Under 17s Tournament Squad. Hayze was also approached by several Australian Scouts and will soon be attending camp in Sydney NSW with the Penrith Panthers. Excellent!

Lorne Green has also been selected to trial with the NZRL Under 16s at Puketawhero. An elite camp based at Tui Ridge will be attended by only those players selected throughout NZ from which trials will take place at Puketawhero Park and the Rotorua Stadium. We wish Lorne the best of luck on his journey towards higher pathways.

MINI-MODS have started, great to see all our little warriors taking to the field on the cold Sunday Mornings. The photos tell it all.

DOUG UNUWAI



UNDER 14S SUCCESS AT THE NINES TOURNAMENT.



MINI-MOD FIELD DAY 2014.



MINI-MOD FIELD DAY 2014.



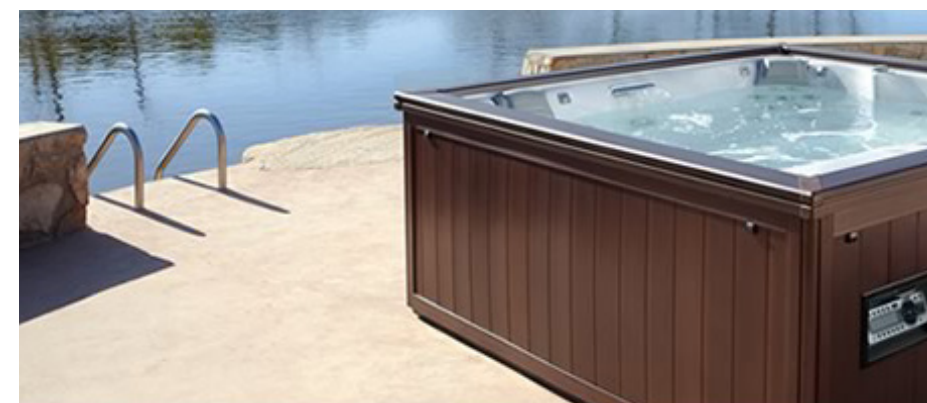
Poolside

Rotorua

RELAX Spa & Pool Ltd

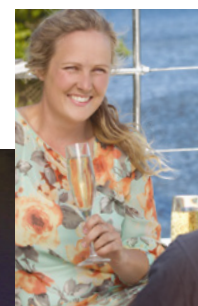
FOR ALL YOUR POOL & SPA NEEDS

- Full range chemicals & accessories in store
- Repairs & servicing all brands
- Installing new aboveground & inground pools
- Supplying spas from \$1,800
- Free water testing
- Valet service to take the hassle out of caring for the pool or spa at your holiday home
- Expert friendly service



Call in to our fabulous new store at: 34 White Street
(next to the Ciabatta Bakery)

PH. 07 349 4414 • EMAIL: relax@relaxspa.co.nz



PURE CRUISE
NEW ZEALAND

Explore and have fun on the Lake
Occasions - Dinners - Family Gatherings
Corporate Functions



*an
Unforgettable
Experience*

PURE CRUISE LAKE ROTOITI ph 0800 272 456 www.purecruise.co.nz

FISH & GAME NEWS

Another good season's boat fishing on Rotoiti has come to an end, but there's still plenty of opportunity to get out and fish some of the winter shoreline areas.

Fish & Game staff have been out surveying anglers catch and there have been some lovely fish caught. We are continuing with our staggered liberation program which means more releases of smaller batches of fish through spring, autumn and summer. We believe this will increase survival of the young fish meaning more for you to catch on Rotoiti. We will continue monitoring this as time goes on.

There is a regulation change for next season that will affect Lake Rotoiti anglers. The boat fishing exclusion zone within the area of Ruato Bay that has been enforced from 1 April to 30 June for the past 3 seasons will be removed. Check your new 2014-15 regulation guides so you are updated with the full list of rules pertaining to your fishing area.

Best of luck for the rest of this season and the coming one. We hope to bump into you on the water.


Thompson Marine Ltd

Rotorua's Specialist Mercury Dealer

Sales & Service
 All makes & models of outboard motors
 Mercruiser stern drives

Marine Accessories
 Including Life Jackets & Ski Vests
 Skis
 Marine Electronics, etc







We are looking to buy or sell on behalf - good second hand boats.

Guaranteed workmanship from fully qualified marine technicians



31 Fairy Springs Road | PO Box 1337 Rotorua
 P : 07 348 4997 or 0800 95 95 90 | F : 07 346 0037 | E : thompsonmarine@seaboss.co.nz



Corner Old Taupo & Sunset Roads
 PO Box 1337 Rotorua
 P : 07 348 4441 | F : 07 349 2944
 info@thompsonmowers.co.nz
 www.thompsonmowers.co.nz

Sales & Service of Outdoor Power Equipment
Rotorua Agents for Husqvarna Outdoor Power Equipment,
including Chainsaws, Trimmers, Ride On Mowers, and more
Also stock and service Lawnmaster, Masport and Honda Power products, Briggs & Stratton and Robin Engines





We service, sharpen and repair all makes and models

Thompson Trimming
Phone 348 4441

Upholstery | Repairs | Furniture Recovering | Boat Canopies
 Squabs | Hull Linings | Forestry Clothing, chaps, pouches, etc.

- ➡ **Bach Maintenance**
- ➡ **Cobblestone Paving**
- ➡ **Retaining Walls**
- ➡ **Fencing**
- ➡ **Instant Lawn**
- ➡ **Decking**
- ➡ **Planting**

TERRA FIRMA
 SINCE 1996



LANDSCAPES

PAUL HAMMOND
0274 923 161
A/h 07 362 0879
www.terrafirmabop.co.nz

LAKE ROTOITI HISTORY

TAPUAEKURA

A PARTICULARLY BEAUTIFUL AND EARLY SETTLEMENT ON THE SOUTHERN SHORE OF TE ROTOITI. IT WAS LARGELY OCCUPIED BY NGATI RONGOMAI, WHOSE TERRITORY, TOGETHER WITH NGATI HINEKURA, EXTENDED FROM TAHUNAROA EATS TO TE RUATO.

The extensive flat lands to the south, bordering Te Toroa and Mangakopikopiko streams, supported many cultivations and small settlements as well as substantial tracts of fine bush. Occupation was centred on the lake-edge area and enclosed by two major fortified pa, Tapaniao and Matarehua, which were sited at the western and eastern ends respectively on the higher ground. The Christian settlement of Te Mapou lay at the eastern end of the beach. Two streams meet the lake at Tapuaekura: Te Tokopa. Draining Te Korororo-o-Hiko spring and swamp at the western end: and Te Toroa, near Te Mapou, at the eastern end. Te Toroa is often referred to as the Tapuaekura Stream and the sand beach and nearby cultivation at its mouth as Tapuaewhero. Here in pre-Christian times there was a tuatu, where a tohunga named Tuau performed various sacred rites. A long tributary, the Mangakopikopiko Stream joins Te Toroa some distance from Tapuaekura and close to SH 30.

Tapuaekura seems to have been spared much of the warfare that affected other nearby communities. One incident of note, however, occurred when a war party of Ngati Whakaue arrived seeking revenge for the death of their chief Te Iwipaia, killed at Waiotekau.

Landing at the mouth of Te Toroa Stream, they seized a valuable fishing net named Ngakirikiri, but met a larger group of locals than expected. Leaping back into their canoes they set off, hotly pursued by those of Tapuaekura.

The two groups raced towards Paehinahina, meeting below Ngarehu (Orehu), where a battle took place. Several Ngati Wakaue were killed including Tauwhitu, who was speared by Hare. Another chief of note, Te Umanui, was captured but spared because of a relationship to Ngati Rongomai. The net was recovered and restored to its proper owners.

The stands of bush adjacent to Tapuaekura were important assets in both pre- and post- European times. A pit was established (c 1845) to supply timber for a church at Te Mapou, and another to assist Te Waata Taranui build his carved house, Rangitihi, at Te Taheke in 1868. More was cut in succeeding years for a variety of projects, including bridges built across both the Okere and Ohau rivers in 1872. In 1884 the first steam-powered sawmill in the whole Rotorua district began operating here.

GOOD WINTER SOUPS

SPICED CARROT & LENTIL SOUP Serves 4

- 2 tsp cumin seeds
- pinch dried chilli flakes
- 2 tbsp olive oil
- 600 g/1lb 5oz carrots, washed and coarsely grated (no need to peel)
- 140 g/5 oz split red lentils
- 1 litre/1-3/4 pints hot vegetable stock (from a cube is fine)
- 125 ml/4 fl oz milk
- plain yogurt and naan breads to serve

Heat a large saucepan and dry fry the cumin seeds and chilli flakes for one minute or until they start to jump around the pan and release their aromas. Scoop out about half of the seeds with a spoon and set aside. Add the oil, carrot, lentils, stock and milk to the pan and bring to the boil. Simmer for 15 minutes until the lentils have swollen and softened. Whizz the soup with a stick blender or in a food processor until smooth (or leave it chunky if you prefer). Season to taste and finish with a dollop of yogurt and a sprinkling of the reserved toasted spices.

Serve with warmed naan bread

Make it Moroccan: Substitute the chilli flakes and cumin seeds for a few teaspoons of harissa paste. You could add shredded chicken at the end of cooking too.

Make it Dairy Free: For a richer but dairy free alternative, use a can of reduced-fat coconut milk instead of the milk.

FATHER ELIAS' FLU SOUP

- 1 chicken leg without skin
- 1 onion
- 6 garlic cloves
- 1 slice of ginger

Chop everything up and boil for at least 30 mins.

When ready to serve, strain, and squeeze in as much lemon juice as you like. Double up the ginger and add a bit of chilli and you will be back to your normal self very quickly

From the contributor: I met Father Elias in Toronto. A young Italian priest who had to cook for some old priests, so of course his recipes had to be simple and this was his soup. It is so quick and simple, good to drink anytime AND it's good for you.



The Happy Angler Store

S.H.33 Mourea,
Okawa Bay

- **Ice Creams**
- **Takeaways**
- **Chicken and Chips & Fish and Chips**
- **Dairy / Grocery**
- **Swappa Gas 9kg**

Open 7.30 am to 7 pm seven days
Phone 07 362 4709

Phone ahead for your Food Order



Hi Flo Pumps & Irrigation Ltd.
72 Old Taupo Road
PO Box 548, Rotorua 3040,
New Zealand

Phone: 07 348 7516
Fax: 07 347 1609

GRUNDFOS master dealer

Hello neighbour.

Bachcare is New Zealand's leading full service
holiday home rental and management company.
Contact us and let Bachcare take care of the details.



0800 42 22 42 . bachcare.co.nz



OUTBOARD SALES & SERVICE BOAT STORAGE LARGE RANGE OF CHANDLERY

236 TE NGAE ROAD,
ROTORUA
Phone 345 9854
Fax 345 9857
www.telfermarine.co.nz



LAKE MAINTENANCE

NOEL & SUZANNE RUEBE | OKERE FALLS

Lawns | gardens | rubbish removed | trees cut
property security | pump maintenance | painting
tractor work | soil & metal cartage

Phone Noel 027-494-8730,
Suzanne 021-072-1241,
Glen 021-139-8860
PO Box 495 Rotorua

Rudolph Painters



Painting
Wallpapering
Spray Painting
Interior
Exterior
Water Blasting
Commercial

Call William for a Free Quote
Ph/Mobile 027 441 9769
A/Hs 07 362 4403

OKERE CHIPPER SERVICES

WE CAN:

CUT YOUR TREES AND CHIP THEM
CUT AND SPLIT YOUR FIRE WOOD
SUPPLY ORGANIC MULCH FOR YOUR GARDEN
REMOVAL OF RUBBISH



NO JOB TOO BIG OR TOO SMALL

CONTACT GLENN - 021 139 8860 MOB
OR NOEL 0274 948 730

NEED AN ELECTRICIAN?

Dean Bloomfield
Electrician

Phone: (07) 362 4909
Mobile: 027 220 3055
info@needanelectrician.co.nz

1207 SH 33
RD4, Rotorua
www.needanelectrician.co.nz

TE NGAE PHARMACY

YOUR FAMILY HEALTHCARE CENTRE SPECIALISING IN:

BABY NEEDS - NUTRITIONAL SUPPLEMENTS
- PHOTOGRAPHICS - TOILETRIES - GIFTS -
MEDICINALS - FIRST AID SUPPLIES

EFTPOS AVAILABLE

Redwood Shopping Centre, Corner of Te Ngae
and Tarawera Roads. Rotorua.
Ph 345 9678. Fax 345 9632

M.C. BHULA Reg.Pharm.NZ

Hours: Mon-Fri: 8.30am - 5.30pm
Sat: 9.00am - 1.00pm



Anglican Church in Aotearoa,
New Zealand and Polynesia

TE NGAE PASTORATE SERVICES

St Mary's Anglican Church - MOUREA
Third Sunday of Every Month - 9.00am

St Marks Anglican Church - OWHATA
(Corner Te Ngae Road & Sunrise Avenue)
Every Sunday - 9.00am

Nou Mai Haere Mai - All Welcome
Enquiries to Rev Ron Roberts - tel 07 345 5783

Boat Repairs and Maintenance



Prevent untimely breakdowns in season

GO MOTORS

Competitive rates, high work standards and friendly advice

- Periodic based servicing
- Cooling system inspection
- Water intake filters
- Impeller inspection
- Oil and filter replacement
- Fuel filter replacement
- General repairs and modification

Contact Stacey Hamblin phone number 07 533 1061 or
027 237 9309 email gomotornz@gmail.com



Steve Howard

www.lakesideproperties.co.nz



mcDowell real estate Ltd

1290 Eruera Street, Rotorua

In times of uncertainty call Steve Howard for good advice and local knowledge.

Steve Howard - m 021 722 408, o 350 3403

Providing the Very Best Service in Selling
Residential Lake Properties.

IMPORTANT PHONE NUMBERS

Fire, Police, Ambulance, Search & Rescue 111

Accident/Medical Centre 348-1000

Urgent Pharmacy 348-4385

Rotorua Hospital 348-1199

St John Ambulance 0800-426-285

National Poisons Centre 0800-764-766

Rotorua Police Station 348-0099

Neighbourhood Support 349-9470

TrustPower Emergency 0800-878-787

Energy Online Faults 0800-083-285

Environment Pollution Hotline 0800-738-393

S.P.C.A. 349-2955

Dog Control (RDC) 348-4199

Harbour Master (7 day) 0800-368-267

Lake Wardens: Mark Farrant 0274-599-006
Max Hughes 0274-966-759
Fraser Wilson 0274-965-070

Coastguard 348-9022

Marine Radio 348-7429

Dept. of Conservation 349-7400

M.A.F. 0800-809-966

Fish & Game Eastern 357-5501

Fish & Game Licences 0800-542-362

Poaching 0800-762-244

Environment Bay of Plenty 0800-368-267

Rotorua District Council 348-4199

Rotorua Lakes Community Board 362-4700
Phill Thomass (Rotorua) 0275-474-455

Lakes Maintenance 362-4814

Pumps - Hi Flo Pumps 348-7516 (24hrs)

Emery Store 362-7866

Happy Angler Store 362-4709

Okere Falls Store 362-4944

Rotoma General Store 362-0722

Manupirua Springs Hot Pools 345 8070

Electrician - Dean Bloomfield 362 4909
027 220 305

REFUSE DISPOSAL

WEEKLY HOUSEHOLD REFUSE COLLECTION

Only RDC Official Bags will be collected

Tie bags securely

Place at kerbside by 8 a.m. on collection day

Lake Rotoiti Collection day is each MONDAY

No changes to collection days on Public
Holidays

REFUSE & RECYCLING OKERE TRANSFER STATION

Located at Okere Road (just south of SH 33)

Hours: 1 pm - 4.30 pm Wednesday
10 am - 4.30 pm Sunday
and last day of every
public holiday period
(The Transfer Station is never open
on Christmas day)

Landfill Fees apply.

Recycling Free of Charge

Domestic Waste only

No Trucks

No Hazardous Waste

For further information call RDC (07) 348-4199

ROTORUA LANDFILL

Located off Atimuri Highway SH 30

1.6 km from Waipa Junction

Hours: Monday - Saturday
7.30 am - 4.30 pm
Sunday and Public Holidays
9.30 am - 4.30 pm

CLOSED Christmas Day

Landfill Fees Apply

MARINE RADIO ROTORUA FREQUENCIES

Coastguard Radio conducts four radio
schedules daily on VHF channel 81

Scheduled times are:-

0745-0800

1130-1145

1530-1545

1800-1815

Channel 81 is the calling frequency
and closes down at 1830 for this area.

Working frequencies are 06, 08 and
64. Please use these vessel to vessel.

Visitors to the area are welcome to use
these services.

Rotorua Lakes Coastguard uses channel
86 for Search and Rescue. Please avoid
using this channel.

Frequent visitors are encouraged to
support this service by joining the
Rotorua VHF Marine Radio Association.
Please contact The Secretary at Box
8000, Western Heights, Rotorua, or
phone 07 348 2318

MEDICAL SERVICES

ACCIDENT & URGENT MEDICAL CENTRE

Cnr Arawa & Tutanekai Streets, Rotorua

Phone 07- 348 1000

Monday - Saturday 8 am- 10 pm.

Sunday 8 am-11.30 pm

ROTORUA HOSPITAL

Accident & Emergency Department

Off Arawa Street

Phone 07-3481199

(Call 111 for Ambulance Service)

Patient enquiries 07-3497977 (Mon-Fri)

LAKESCARE (URGENT) PHARMACY

Cnr. Arawa & Tutanekai Streets, Rotorua

Phone 07-348 4385

Open 7 days 8.30 am-9.30 pm

TE NGAE PHARMACY

Redwood Shopping Centre

Phone 07-345 9678

Monday- Friday 8.30 am-5.30 pm

Saturday 9am-1 pm

DEFIBRILLATOR AT THE FIRE STATION IN OKERE ROAD

IN A MEDICAL EMERGENCY CALL 111

AMBULANCE but also advise the operator of
the defibrillator on the fire truck. They page
West Rotoiti Volunteer Fire Unit who could
be with you a lot faster than an ambulance
coming from Rotorua.



BETWEEN WATERWAYS

This Newsletter is printed on sustainably
produced paper FSC Certified (An
independent, non governmental, not-for-
profit organization established to promote
the responsible management of the world's
forests to meet the social, economic and
ecological needs of present and future
generations)

LRCA CONTACT DETAILS

All written correspondence should be sent to:

The Secretary

LRCA

Postal Delivery Centre

Mourea 3074

Email: lrca@xtra.co.nz

Website: www.rototi.co.nz