



# LAKE ROTOITI COMMUNITY ASSOCIATION INC.

## NEWSLETTER SUMMER 2012/13

### CHAIRPERSON'S REPORT DECEMBER 2012

**AGM:** The Annual General Meeting of our Association will be held on Wednesday, 2nd January 2013 at the Pikiaro Rugby League Clubrooms, Takinga Street, Mourea at 10 am. It is important to us that all residents attend this meeting and put forward their views. Light refreshments will be served following the meeting. We look forward to seeing you there!

**RATES:** The RDC 2012-2022 Long Term plan indicates a move from the present rating system with differentials (rural residential properties are currently 85%) to a system with no differentials. Jim Stanton of our Committee and Brentleigh Bond, Chair of the Lakes Community Board, have consistently advocated for rural communities and it is important for us to realise that should the differential be removed in one jump this could be expected to add approximately 19.5% (or \$400 per property...inc GST...with a medium capital value of \$360,000) to the rates levied by RDC in the present 2012/13 year. Higher value properties can expect to pay considerably more.

**SEWERAGE:** I refer you to Phill Thomass's article in respect of the current RDC thinking on proposed installation of sewerage reticulation to Eastern Rotoiti and Rotoma. Our Association was party to the Environment Court Hearing, along with Tamatea Street Ratepayers Association and we are keenly watching developments. It is heartening to know that pricing has finally been acknowledged as a key factor for Eastern Rotoiti residents. The initial proposed costings for our residents affected by this scheme have always been of great concern to us.

**JETTIES:** In a recent draft of its 'Public Lake Structures Policy', RDC has signalled its desire to reduce the total number of private lake structures (jetties, boatsheds, moorings etc.) in some of the District's lakes. The policy indicates that at the end of the present ten (10) year 'Right to Occupy' period, an assessment will be completed on the practicalities of reducing the total number of private lake structures in the general area by encouraging private lake structure owners to consider shared use of facilities.

**HILARY PRIOR (CHAIRPERSON)**

### NOTICE OF ANNUAL GENERAL MEETING

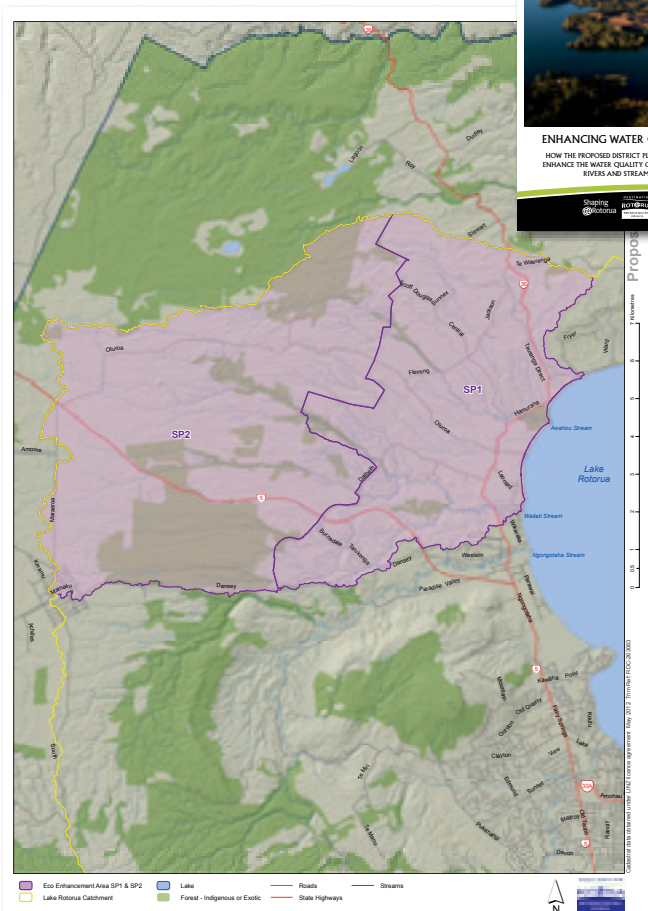
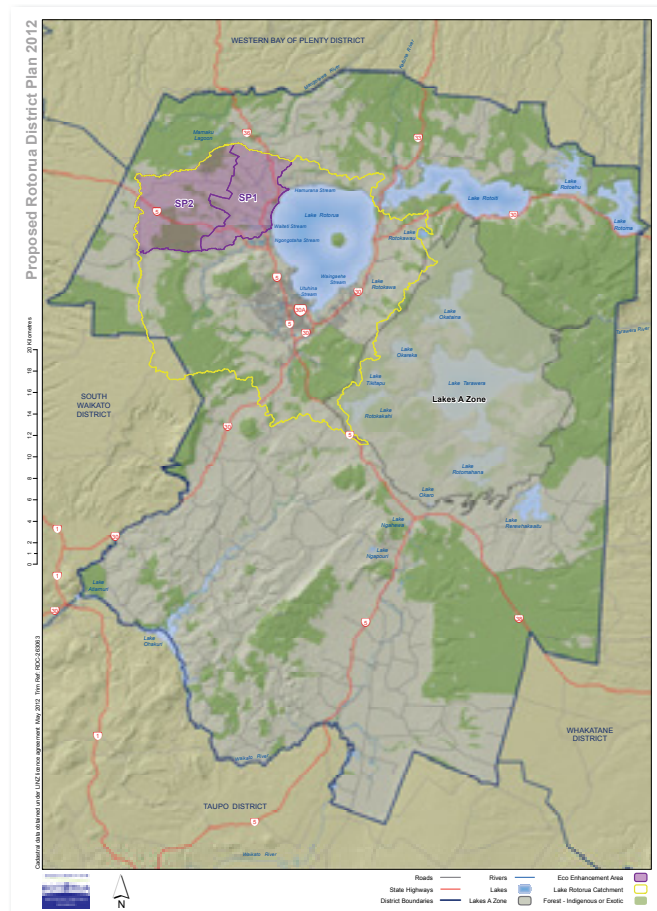
#### OF THE LAKE ROTOITI COMMUNITY ASSOCIATION INC.

To be held at Pikiaro Rugby League Clubrooms, Takinga street, Mourea  
10 am Wednesday 2nd January 2012

Minutes of the 2012 AGM together with Financial Reports can be viewed at our website [www.rotaiti.co.nz](http://www.rotaiti.co.nz)

**LRCA WEBSITE:** [www.rotaiti.co.nz](http://www.rotaiti.co.nz)

# WATER QUALITY AND TRANSFERABLE DEVELOPMENT RIGHTS (TDRS)



The Rotorua District Council is proposing as part of the draft District Plan notified 31 October, to introduce Transferable Development Rights (TDR's) to complement other initiatives by the Rotorua Lakes Strategy Group and BOP Regional Council to encourage the reduction of nutrient leaching from rural land.

The TDR initiative is simply a proposal at this stage. The Council is expecting your feedback, so please get involved. You have until **18 January 2013** to offer feedback.

The proposed plan can be viewed online at [www.rdc.govt.nz](http://www.rdc.govt.nz) or in print copy at the Council Civic Centre, the Library and City Focus. Feedback can be made via the online website or by completion of a submission form available at these same locations. Part 9 (Rural) and Part 13 (Subdivision) – particularly the five pages comprising Section 13.10.1.1 – of the proposed plan, contain most of the relevant information. In addition Map # 215 (2 maps) show the specific detail of areas affected.

**What are Transferable Development Rights?** TDRs encourage landowners to make a change to the use of their land that

results in a reduction of nutrients entering waterways. This particularly applies to Nitrogen. It is intended that this may lead to new land uses that have less impact on water quality.

**Where do they apply?** TDRs have come up for serious consideration in Lake Rotorua because many dairy farms are located away from areas Council intends to service with infrastructure in the short to medium term.

TDRs earned by farmers on their 'donor' property can be traded for the right to subdivide in areas designated for that purpose. These 'recipient' or 'implementation zones' may be geographically removed from the 'donor' property.

The District Plan actually limits donor eligibility to properties in area SP2, a segment in the northwest part of the Lake Rotorua catchment with a high proportion of dairy farms, where the effects of nitrogen in the lake most need to be reduced. Area SP1 is nearby but has superior infrastructure services. There is some community concern about the equity of limiting TDR donor and implementation eligibility to only these

specified zones.

**How does it work?** If a landowner can demonstrate that a proposed change to their land will reduce nutrient losses beyond a 500kg minimum benchmark, then a TDR may be granted by the Rotorua District Council and registered to the property title. The N equivalence of each TDR has yet to be decided, but it is proposed that each TDR will create an opportunity for one extra subdivided lot, allowing a higher density development than would normally be approved in a rural area. The land owner may also sell the right to subdivide their land to another owner so that the income can help finance a change in land use.

There will be a "cap" on the number of TDR lots that can be created, so that supply does not exceed demand and result in decreased TDR values.

If you have a particular interest in this topic please email LRCA committee member Warren Webber via [lakesnews@xtra.co.nz](mailto:lakesnews@xtra.co.nz). It may be possible to facilitate a TDR discussion forum prior to 18 January 2013, by which date feedback is required.

It is very pleasing to report that no new actions have been necessary for Lake Rotoiti this year as the nitrogen and phosphorus reduction targets have been reached through the construction of the Ohau Diversion wall and sewage reticulation. Our 3-yearly average TLI is below our target.

However, BOPRC and RDC have continued to face the challenges in restoring and protecting the Rotorua Te Arawa Lakes. A quick snapshot of the status of the lakes measured by the Trophic Level Index (TLI) as shown below:

Lake	Trophic Status	3-yearly average TLI to 2012	TLI Target	(Negative/ Positive)	Trend
Okaro	Supertrophic	5.1	5.0	(0.1)	x
Rotorua	Eutrophic	4.4	4.2	(0.2)	✓
Rotoehu	Eutrophic	4.3	3.9	(0.4)	✓
Rotomahana	Mesotrophic	4.0	3.9	(0.1)	o
Rerewhakaaitu	Mesotrophic	3.8	3.6	(0.2)	o
Rotoiti	Mesotrophic	3.5	3.8	(0.3)	✓
Okareka	Mesotrophic	3.3	3.0	(0.3)	o
Rotokakahi	Mesotrophic	4.2	3.1	(1.1)	✓
Tikitapu	Oligotrophic	2.9	2.7	(0.2)	✓
Okataina	Oligotrophic	2.9	2.6	(0.3)	x
Tarawera	Oligotrophic	2.9	2.6	(0.3)	x
Rotoma	Oligotrophic	2.3	2.3	-	x

## Overview Comments

The 2012 annual TLI of 4.08 in Lake Rotorua showed a strong response to the alum dosing programmes for the Utuhina and Puarenga streams. Significant concentrations of phosphorus have been locked up by aluminium sulphate (alum), resulting in less phosphorus available for algae growth in the lake. These outcomes are very positive, but long term use of a chemical is simply not sustainable. It is important that we continue to focus on reducing the nutrients going into the catchment through land use and land management change.

Lake Okataina is surrounded by native forest and a largely unmodified catchment. Yet it is trending negatively due to high concentrations of phosphorus. A lake plan was completed this year and the concentration of pests, in particular wallabies, was seen as a principal cause of damage to the understory of the native bush, leading to soil erosion. It is now recognised that this pest

problem may also be affecting several other lakes too and will be the subject of study in the New Year.

Lake Tarawera is also trending negatively giving rise to a draft lake plan which will be completed in December 2012. A final plan is expected to be completed by April 2013.

Although the 3 yearly average TLI achieved the target, phosphorus concentrations in Lake Rotoma are the highest on record since 1991 when monitoring was begun. This underscores the need to get the sewage scheme up and operating as soon as possible.

Principle actions carried out in the Lakes programme to 30 June 2012 were:

- Aeration/destratification devices have been trialled in Lake Rotoehu. The results and success of this programme is critical to the in-lake solutions for Lake Rotorua.
- RDC has completed the upgrade works at the city wastewater treatment plant (WWTP) using Membrane Bio-Reactor technology.
- Two of the largest floating wetlands in the world were established in Lakes Rotorua and Rotoehu.
- The Hamurana Sewage Scheme has progressed significantly with 400 properties now connected with commissioning well ahead of schedule.
- A land use change agreement was secured which retired over 600 hectares of land to trees in the Lake Rotoehu catchment.
- On 31 August 2012 the Bay of Plenty Regional Council (BOPRC) agreed to hold a Lake Rotorua Catchment Stakeholder workshop. The outcome has been the establishment of a Stakeholder Advisory Group (STAG) which will advise on:
  - the allocation of 435 tonnes of nitrogen per year to the catchment users
  - rules for the Regional Water and Land Plan
  - plans to encourage land use and land management change
  - developing incentive programmes for farmers

LWQS's overall goal is to ensure that Lake Rotorua is at a sustainable TLI status within 50 years so that it does not compromise the water quality of Lake Rotoiti, the Kaituna River or the Maketu Estuary when the diversion wall is ultimately retired.

Concerns have been expressed this year that due to the fluctuating practices of managing the Okere gates, reflux is occurring around the diversion wall. We have asked that a monitor be put on the eastern side of the diversion wall to measure such occurrences and to assist in the management practices of the gates.

We wish you a very Merry Xmas and a prosperous New Year and travel safely.

**JOHN GREEN** | CHAIRMAN  
LAKESWATER QUALITY SOCIETY



# BAY OF PLENTY REGIONAL COUNCIL NEWS:

## ROTORUA LAKES PROGRAMME UPDATE

**LAKE ROTOITI:** The long term water quality trend in Lake Rotoiti continues to improve.



**LAKE ROTORUA:** Lake Rotorua's water quality continues to improve with the 2011-2012 monitoring year showing the best water quality in decades. This fantastic result is likely to be due to a cold and windy summer which stopped nutrients on the lakebed being released in combination with significant alum dosing of

the Utuhina and Puarenga streams. Monitoring has also shown a decreasing trend in the total nitrogen entering the lake. More information and modelling are required to better understand the effects alum dosing is having on lake water quality and to confirm the downward trend in nitrogen from the agricultural sector.

Both rules and an incentive scheme to reach the sustainable nutrient load are in the early stages of development for the Lake Rotorua catchment. A lot of work is being done to make sure the farming community affected are involved in the process. As part of this a Lake Rotorua Catchment Stakeholder Advisory Group has been formed to provide input, advice and recommendations on both the rules and incentives.

The Hamurana/Awahou Sewerage Reticulation is ahead of schedule and is due for completion in March 2013.

One of the world's largest man-made floating wetlands has been completed for Lake Rotorua. The Lake Rotorua wetland is about the size of one and a half rugby fields and spells out 'Rotorua' in giant floating letters. Over 20,000 native plants have been sewn into the constructed wetlands. It is these plants that remove the nitrogen and phosphorus from the lake



**AQUATIC PESTS:** Lakes Rotoma, Okataina, Okareka, Rotokakahi, Tikitapu and Rerewhakaaitu have been given the all clear with no new aquatic pest plant or invasive fish species found in the pre-summer surveillance this year.

Hornwort was found at various sites in Lake Okareka in March 2012 and more work is planned in February 2013 to determine the full extent of the incursion and what can be done about it.

The pre summer lakes weed spraying was completed at 23 sites around the Rotorua lakes. These were made up of boat ramps and high use vector areas. 10 sites were controlled around Lake Rotoiti. These included Gisborne Point, Te Ruato Bay, Hauparu Bay, Cherry Bay, Okawa Bay, Te Weta Bay, Otaramarae Boat Ramp, Okere Inlet, Kakaho Bay and the Hot Springs

A weed cordon for Lake Rerewhakaaitu is planned for installation in February 2013.

### LAND MANAGEMENT

**UPDATE:** For sustainable long term lake water quality many lake catchments need to see a reduction in the amount of nutrients entering the lake. The following land use agreements were secured:

Conversion of 668 hectares of pasture to pine trees in Lake Rotoehu catchment over two years removing over 4 tonnes of nitrogen

As part of the Afforestation Grants Scheme 80 hectares of dry stock and gorse were converted to pine trees in the Lake Rotorua catchment in the last year.

Additional work on fencing lake margins continued which contributes towards nitrogen reductions. For Lake Rotorua this resulted in an additional 3.5km of fencing of lake margins; now 90 percent of the Lake Rotorua's lake margin is now fenced. Lakes Rotoiti, Rerewhakaaitu and Rotoma lake margin fencing is completed.



## ROTORUA HARBOURMASTER: UPDATE

Lake Rotoiti has a new warden stationed at the hot pools. You will see the warden's flag flying to slow people down in the required 5 knot zone. This is extremely important given the number of children swimming in the area. Thanks to Kathy for doing this vital role and to her employer Tim Manning for allowing it.

New signs have been erected at all boat ramp jetties warning people of the penalties involved with power-loading or driving a vessel on or off a trailer at a boat ramp. We plan to clamp down on this and anyone who can supply video evidence and a vehicle registration number to us we would appreciate it. We will be watching this area more over the summer period.

With summer approaching fast we have already seen a decrease in the water level at Lake Rotoma. The boat ramp behind the store has been closed off and launching and retrieving can only be done from the tarmac area. Please exercise caution

when doing this. Parking has also been reduced. Rotorua District Council is monitoring this and will reinstate as much of the original parking as soon as possible. A new floating jetty is installed at the Mataha Spit boat ramp and this is proving successful.

The maritime team will be out and about endeavouring to maximise water safety and boating behaviour. You will see our patrol boat on occasions but we will also use two unmarked vessels.

Many thanks to our wardens in the area, we appreciate the unpaid hours that you invest and being our eyes and ears. You are real assets to our community.

We wish you and your families a very Merry Christmas and hope you have a safe and enjoyable boating season.

**REGARDS, ROSS & PERERIKA** MARITIME ROTORUA

# EASTERN ROTOITI ROTOMA SEWERAGE SCHEME DECEMBER 2012 UPDATE

Since our last newsletter there have been both developments and a standing still on the Eastern Rotoiti – Rotoma Sewerage Scheme.

**Movement** – in that the appeals to the Environment Court against the granting of a Resource Consent for a Sewerage Treatment Plant to be built on the edge of Lake Rotoma went ahead when mediation failed to resolve issues raised. The Appeal before the Environment Court lasted 5 days, but was then adjourned with the agreement of all parties to allow RDC to investigate alternative sites within the Consented area. The Court was scheduled to sit again in October.

**A Standing Still** – because RDC relinquished the Consent in October and is now exploring other options.

In fact the relinquishing of the Consent for the Treatment Plant was a good result for everyone. The Appeal in the Environment Court showed up many flaws in RDC's consultation process, and while the science finally seemed to come out favourably for the site (although this was disputed by one of the appellants), it was apparent this was through luck rather than a responsible and comprehensive investigation of the site before purchase. The adjournment of the Hearing and subsequent relinquishing of the Consent perhaps gave Council a graceful way to extract itself from a case it could easily have lost, and of course answered all concerns of the Appellants.

So where are we now?

The most positive thing to come out of the Consent and Appeal process was that RDC came to realise that their pricing model for the scheme was totally out of touch with what the communities affected by the scheme could afford. I am pleased to say that a determined renegotiation of the funding rules by RDC with central government, and the current economic situation, have meant that RDC was able to revise costs to each household down to a much more realistic level, almost halving the proposed cost.

Of course having to find another way of implementing a sewerage scheme may impact on this. RDC is currently looking at alternative options which it is hoped will be put in front of Council for a decision in February 2013. Indications are that the frontrunner options would come in at about the same cost as the now dropped scheme, so that the cost to households would remain approximately the same.

It is frustrating that while the preferred options may be a badly kept secret, I don't feel able to reveal them in print. Whilst individuals within RDC are happy to talk to people who have been involved in this process for the last year on a one to one basis, there has been no official interaction between RDC and the communities affected by this scheme. RDC does not seem to have learnt any lessons from the process so far. The new preferred options are much less controversial (for our communities at least) than the original scheme, and cost issues do seem to have been addressed, but still an engagement with the communities must surely be beneficial in rebuilding the trust in Council lost by many who felt the original scheme was being imposed on us all with no real consultation.

Phill Thomass

## SH33 SUNVALLEY/PARETEIRO CURVE ALIGNMENT PROJECT UPDATE

**Project Overview:** To remove a series of tight curves to improve safety and provide a passing lane toward Rotorua.



NEW LAYOUT



DIGGER CLEARING THE SITE

### What's Happening Now:

- The contractor is setting up a site office and undertaking surveying and clearing works beside SH33.

### What Will happen Over the Next Month & Onwards:

- Large scale earthworks will commence to remove part of Pareteiro Hill.
- The new road layout will be formed beside SH33.
- The project is expected to run until 2014.
- Regular project updates will be sent out during the works.

### Traffic Management:

- The construction works will not affect traffic prior to Christmas.

### Spreading the Word:

- These email project updates are available to anyone who regularly travels this route and/or has an interest in this project. People can sign up to receive these updates by emailing: [sunvalley@rdc.govt.nz](mailto:sunvalley@rdc.govt.nz)

For More Information Please Contact: Rotorua District Council  
Customer Centre – Ph: 07 348 4199, Email: [sunvalley@rdc.govt.nz](mailto:sunvalley@rdc.govt.nz)  
Website: [www.rdc.govt.nz](http://www.rdc.govt.nz)

Contractor – Higgins Contractors Bay of Plenty, Tauranga, Ph: 07 574 4100

Media enquiries – Glenda Dobbyn, NZ Transport Agency: Ph: 07 927 7908, 02102167217, Email: [Glenda.dobbyn@nzta.govt.nz](mailto:Glenda.dobbyn@nzta.govt.nz)

# COMMUNITY BOARD UPDATE

With the 2012/13 rating year now well underway, and the first of the 2013/14 years rates not due for payment until August 2013, rating issues probably do not feature highly on your list of things to think about. However, in order to get a draft annual plan out for consultation in April next year, Council are hard at it preparing the next round.

At this stage we have no idea what the proposals for the 2013/14 year will be. However Rotorua District Council has already signaled, in the 2012/22 Long Term Plan, their commitment to phasing out rating differentials for different classes of property over time. This announcement is one that the Community Board views with considerable concern as it has the potential to considerably increase the rates you pay annually.

Information provided by Council indicates that if these differentials (the rural residential differential is presently 85% of the standard rate while the business differential is 220%) had been phased out for the current year, our rates would have risen by 19.5% or approx. \$400.00 per rural residential property with a medium capital valuation of \$360,000. Higher valued properties would have paid considerably more.

The Board is in continuing discussions with Council officers and the LRCA regarding this proposal and we will keep you informed of progress. In the meantime, if anyone has any comments that may be helpful to our discussions, please do not hesitate to let us know at [grahamb@clear.net.nz](mailto:grahamb@clear.net.nz).

In a recent draft of its 'Public Lake Structures Policy', RDC has signaled its desire to reduce the total number of private lake

structures (jetties, boatsheds, moorings etc.) in some of the District's lakes.

The policy indicates that at the end of the present ten (10) year 'Right to Occupy' period, an assessment will be completed on the practicalities of reducing the total number of private lake structures in the general area by encouraging private lake structure owners to consider shared use of facilities.

Our current 'Right to Occupy' consent has some years to run at this stage. We consider that jetties (boatsheds etc.) are an integral part of owning a lake edge property and enjoying the lake, and the Board has recently made strong submissions opposing this proposal and will continue to press this as appropriate.

We wish you all a very happy and enjoyable Christmas and a bright and prosperous New Year.

**BRENTLEIGH BOND** ROTORUA LAKES COMMUNITY BOARD

PH: (07) 362 4700 • TXT: (0274) 816 368 • EMAIL: [GRAHAMB@CLEAR.NET.NZ](mailto:GRAHAMB@CLEAR.NET.NZ)

2013		
Meeting date	Venue	Time
7 Feb	Rotoma Community Hall	7:00pm
14 March	Committee Room 1, RDC	1:30pm
9 May	Rotoiti (Amora Hotel)	7:00pm
20 June	Committee Room 1, RDC	1:30pm
1 August	Committee Room 1, RDC	1:30pm
12 Sept	Okareka/Tarawera (Buried Village)	7:00pm
31 Oct (Inaugural)	Committee Room 1, RDC or Chamber	1:30pm
29 Nov	Committee Room 1, RDC	1:30pm

## FISH & GAME NEWS

### NOVEMBER 2012

Fish & Game staff are nearing completion of the spring liberations to Lake Rotoiti for 2012. Previously, we have released all of the spring fish in one hit (September), but recently undertaken research has shown us that we are likely to get better growth and survival of the juvenile trout if the liberation is spread over a wider timeframe. Winter is a poor time for growth in the lakes and we are safeguarding the hatchery investment by insuring ourselves against the possibility of a delayed winter. Spring liberations now occur through September, October, November and December. As with last year the number of fish released during spring was 13,500 fish let go at winter shoreline fishing areas from Ruato Bay to Hinehopu. The fish return to release sites to spawn so are therefore available for shoreline anglers to catch. The total liberation to Rotoiti is 28,500 fish.

Fish & Game staff will again be out over the summer period

undertaking our fishery creel surveys and checking licences. It's always great to catch up with you all out on the water and see how things are going so we will look forward to bumping into you.

This year will be third year that the Ruato Bay boat fishing prohibition rule has been in force. From 1st April, no boats will be allowed to fish within the confines of the East and West points of Ruato Bay (marked by black/ yellow and white landmark poles) extending offshore 200m until the end of the season. This trial directed by the Eastern Region Fish and Game Council is to see if this intervention will improve shoreline success for winter anglers by restricting the harvest of fish that may congregate in autumn before running toward the beaches. The previous two winter periods surveyed have not proved any benefit to Ruato Bay beach angling versus the rest of the open winter shoreline.





**BEER GARDEN**

*Open 7 days*  
SH 33 Okere Falls R.D.4  
ROTORUA Ph/Fax 07 3624944  
**okerefallsstore.co.nz**

*Hours:*  
Store: 7am to 7pm  
Beer Garden: till 9pm Fri & Sat

**Groceries**  
Italian Groceries  
Gourmet Groceries

**Wine and beer**  
Espresso, cakes  
Bratwurst, pies,  
Icecream, soup  
Sandwiches..

**Organic products,**  
Local products  
Fresh fruit and  
veges ...

**Gift Boxes, Catering**  
Eat-in & Take-out  
"heat and eat" meals  
Friendly staff, great  
atmosphere & nice  
couches!



Mon- Fri - 7.30 am - 7pm  
Sat - 9 am - 4pm  
Sun closed

## LAKE ROTOITI HISTORY

### OTARAMARAE

Settlement and valued cultivation area at the northernmost point of Te Rotoiti near its western end. It once provided a major departure and arrival point for those travelling between the lake and coast at Maketu. It was also the site, at Pounamunui, of an important house named Houmaitawhiti, built near the lake edge by the noted carver Puwhakaoho II about 1820. With the threat of a Ngapuhi invasion in 1823 the house was dismantled and the carvings buried for safety. Some years later they were recovered but found to be badly decayed.

At least one poupou survived and was used in a house built about 1860. Also named Houmaitawhiti, it was carved by Wero and Pita Te Wharetoroa, a son of Puwhakaoho II. Another carver for this house was Te Ahoaho, who was later killed fighting against the British at Gate Pa. At least some of the poupou for the 1860 house were made from a canoe Ahitaunoa, which was given to Pita Te Wharetoroa by Ema Te Kirikau.

By the end of the decade many of Te Arawa had settled at Maketu, and Ngati Pikiao decided that Houmaitawhiti should be with them. It was dismantled, carried piece by piece to Maketu and re-erected in the main pa there. Of considerable importance was its reopening during December 1870 by New Zealand's first royal visitor, Alfred, Duke of Edinburgh.

Land Court hearings and development in the Rotorua/Rotoiti area during the 1880s saw a return to these districts of many from Maketu. Houmaitawhiti, left behind and largely unattended, became derelict and ultimately in danger of collapse. In 1901 it was again dismantled and stored away until 1912, when the old house was returned to



**HOUMAITAWHITI, A FAMOUS HOUSE OF TE ARAWA, AS IT STOOD AT MAKETU C.1886. THE GREAT MAIHI SHOWN HERE ARE NOW ON LOAN TO ROTORUA'S MUSEUM OF ART AND HISTORY.**

Otaramarae by a team under Te Reiwhati Vercoe and re-erected on its present site. On this occasion heavy timbers taken from the abandoned flour mill at Pukeko were used in the structure. Tene Waitere was engaged to prepare additional and replacement carvings and the completed building was officially re-opened in 1913.(?)

During the 1960s a decision was made to restore Houmaitawhiti. The original 1870 maihi were placed on loan with Rotorua's Art and History Museum and replacements (and other pieces) were prepared by the carvers Tuhaka Kapua, his son Tony, Taunu 'Doc' Taepa, and Thompson Tahuriorangi. The work was supervised by Mana Thomas, and on 18th April 1970 the restored house was officially opened by Duncan McIntyre, Minister of Maori Affairs.

*Reproduced with kind permission from Landmarks of Te Arawa, Volume 2 by D.M. Stafford*

# News from the Fire Station

As this article is written, our fire crew from Okere Falls and two fire appliances from Rotorua are just returning from a house fire in Otaramarae in the early hours of December 1st. The old house on a rural property off Maniatutu Road was well ablaze on arrival of our crew. While our small fire truck could drive up close, the two fire trucks from Rotorua had to stay put a couple of hundred metres back from the fire because the driveway was too narrow and overgrown to allow a full size truck to come through. The fire was eventually put out through water supplies from our tank and by setting up a portable pump from the nearby lake. Fire investigators suspect arson.

Since our last LRCA newsletter contribution in autumn our fire station has seen just over 20 callouts in the wider Lake Rotoiti area, all of which we were able to attend. A couple of those incidents also had access problems due to driveways being very overgrown. In this context we would like to remind property owners to keep their driveways clear of branches and trees if they wish a fire truck to attend an emergency on their property.

During the winter we have been occupied with a new project. After the boat fire on the lake near Otaramarae Bay in April, a local resident has come up with the generous offer of supplying West Rotoiti Volunteer Fire Unit with a boat for fire fighting purposes. While the likelihood of frequent boat fires on the lake is fairly small, the boat will allow us easy access to vegetation fires on lake areas with limited or no road access (as happened in the past). The boat has a portable pump on it and can draft water straight from the lake through customized pipe fittings in the hull. Additionally, the boat will also be used in conjunction with Rotorua Lakes Harbour Master and Coastguard as a first response to emergencies on Lake Rotoiti.

The boat is a Stabi Craft 1850 Frontier with centre console, powered by two 50hp 4-stroke Yamaha engines. The vessel will be operated under Maritime New Zealand survey rules. The original quote was for a 1750 Frontier. Through the generosity of Stabi Craft & Ocean Sports Marine in Whakatane, we are now receiving the larger vessel at no extra charge. Ocean Sports Marine in Whakatane are the principal dealership for Stabi Craft boats and also deal in Yamaha engines. This sort of generosity has not only been seen from our main donor and the previously mentioned companies. Other local residents have come forward and offered to have the vessel painted and to cover the freight cost from the Stabi Craft factory in Invercargill to Whakatane.

We are now going to have to look at raising funds to extend our fire station so the boat can be kept there. We are fortunate to have the use of a lake front boat shed until this happens. We will be present at the Lake Rotoiti Community Association's AGM in early January with both our fire appliance and the boat. It is intended to carry out an official welcome and launch of the boat then. We would welcome as many of you to attend as possible.

Several people have approached us recently wanting to get donations to us. We are considering doing a flyer drop through the RD4 mail delivery again which would go to every household in the area. In the meantime we publish our bank details here, or cheques can go to our Treasurer Carol Goodman, 12 Foster Road, Okere Falls. If you would like a tax deductible donation receipt please indicate this to Carol and she will issue one for you.

West Rotoiti Volunteer Fire Unit Inc.

BNZ Rotorua • 02-0412-0106207-000

If you are interested in joining rural fire please give Andi Uhl (362 4264) or Guy Nelson (362 4764) a call.

Wishing you all a good and safe summer at the lakes!

**ANDI UHL** CHAIRMAN WRVFF

## DEAR EDITOR

The question I'm most often asked goes something like, "How's everything in the Mountain biking [or cycling] world?" The second most Common; "How's everything at Council?"

While I can talk cycling until your eyes glaze over, the issues 'down at Council' that occupy my mind and keep me awake at night are more likely to be rates, rating differentials, CBD parking, waste water capital costs and consultation on any of the above – to name a few. That said, our cycling infrastructure is undergoing some exciting developments at present. Happy to answer questions on any of the above; email [dworld@vodafone.co.nz](mailto:dworld@vodafone.co.nz)

Changing subject slightly, 2013 is local body election year. Local Government will see the start of great change before the elections:

- The Local Government Reform Bill will become law, likely removing the 4 well-beings and enabling further amalgamations.
- The Remuneration Authority will set the salaries for all Mayors, Chairs [of Regional Councils], Councillors, Community Boards and their Chairs early next year. These salaries will become public knowledge so that people can consider remuneration [alongside the time commitment] before lodging their candidacy.
- Finally, LGNZ, which provides training, policy advice and advocacy for member local bodies has a new CE and is also undergoing much needed reform of it's vision and mission along with a restructure.

Let's hope the Christmas spirit of peace, giving, and goodwill never changes! Compliments of the Season to all your readers.

**DAVE DONALDSON** COUNCILLOR, ROTORUA DISTRICT COUNCIL

## RESIDENTS' FEEDBACK WELCOMED ON PROPOSED DISTRICT PLAN

After five years of research, consultation and constant refinement, councillors have signed-off formal "notification" of our proposed District Plan.

This is the phase where residents can make submissions on the plan's content and help us develop a second generation District Plan for Rotorua.

District plans are legal documents required under legislation, and they guide councils in managing district development, by regulating the effects of new buildings and activities.

You might want to check out the details and the online submission form on our new website [www.rdc.govt.nz](http://www.rdc.govt.nz).

I encourage readers to keep up-to-speed with council news by regularly visiting the council website as new information items are posted daily, as are issues where we are looking for community feedback to help us in our decision-making.

I extend my personal best wishes to all residents and their families for a safe Christmas and a great 2013.

**MAGGIE BENTLEY** COUNCILLOR, ROTORUA DISTRICT COUNCIL



## UPDATE FROM TODD McCLAY MP FOR ROTORUA

2012 has been an exciting year to be Rotorua's representative in Parliament. The Government's agenda for social welfare reform, hardening up on criminal activity, giving more support to victims of crime and economic rebalancing is progressing well. New Zealand is internationally regarded as having weathered the Global Financial Crisis better than many countries, and with exciting new trade opportunities opening up within the Asian market, the future is looking brighter.

Locally I have enjoyed getting out and supporting as many local charities and community groups as possible. A highlight was participating in a number of Conservation Week activities, including welcoming back the Ohau Channel clean-up group organised by Justin Hutton and the River Rats team. The Department of Conservation tell me that Rotorua was particularly active and well organised this year, which we can all be very proud of. I also enjoyed spending time on Lake Rotoiti during the Wooden Boat Regatta and am pleased to have worked closely with LWQS, the Wai Ora Group and the Lake Rotoiti Community Association on water quality issues. We are starting to see real progress both in policy and in the improving quality of our lakes.

I would like to wish you all a very happy and relaxed Festive season, and I hope that wherever you go, you get there safely.

Pure Cruise - Rotoiti owned and operated



*Sail Lake  
Rotoiti aboard  
the yacht Tiua*

**At over 50 feet, this beautiful sailing catamaran is the perfect floating venue for functions, birthdays, weddings or dinners.**

**Scheduled daily sailings or private charters from \$30pp for 3 hours.**

**FREEPHONE-0800 272 456  
WWW.PURECRUISE.CO.NZ**



- **Bach Maintenance**
- **Cobblestone Paving**
- **Retaining Walls**
- **Fencing**
- **Instant Lawn**
- **Decking**
- **Planting**

**TERRA FIRMA**  
SINCE 1996



**LANDSCAPES**

**PAUL HAMMOND**

**0274 923 161**

**A/h 07 362 0879**

**[www.terrafirmabop.co.nz](http://www.terrafirmabop.co.nz)**

# GARDENING NOTES: FESTIVE FLORA

With Christmas fast approaching, here are a few notes about some seasonal plants. Roses, of course, are heavily in flower during late spring and early summer. Here is a photograph of an old French rose, *Rosa gallica* 'Charles De Mills', taken on 30 November 2012, with the shrub in full bloom. This rose dates back to (probably) the early to mid 19th Century, a reasonable guess to its age would be 150 years or more. Our shrub scrambles up through other shrubs to a height of about 3 metres. The thorns are few and small, more like prickles really. The sole care it gets is a light prune every few years, to keep it in its place, and the occasional handful of blood and bone. As you can see, the flowers are of a most sumptuous colour. It only flowers once a year, but so do most shrubs. About 20 years ago, we could always rely in having flowers of this rose to pick on Christmas Day, but it has gradually got earlier and earlier in its flowering, and by Christmas they will all be gone. Strange behaviour!

Christmas, of course, is flowering time for the pohutukawa (*Metrosideros excelsa*), such a familiar friend for most people living in the northern half of the North island. They are generally confined to coastal areas, and must be considered the seaside tree par excellence. However, at Rotoiti we are fortunate to have one of the few inland populations. Just how they got here is uncertain, but they add a

great deal to the local landscape, with many fine old specimens, particularly along the northern shoreline. The local population is apparently of quite low genetic diversity, but the trees grow and flower well. Many of the locals are really hybrids with the

Northern Rata (*M. robusta*) and they tend to be more upright growing than most 'pohutas'.

Finally, a Christmas orchid. If you slow your boat down and nose in under one of the overhanging pohutukawas around the lake, you are likely to see 'thickets' of a semi-shrubby native orchid, *Winika cunninghamii*. This has numerous white flowers, usually with a purple blotch on the lip, which are produced over the Christmas/ New year season.

Here is a rather elderly photograph, from a pre-digital age – I must take a new photo this summer! The flowers are not large – about 2.5 cm across, but very attractive. The plant looks rather like a slender, branched bamboo. This plant is an epiphyte, meaning that it grows on other plants, usually the pohutukawa in this district. It is not a parasite. Take a look, while you are under the tree, at the numerous other epiphytic plants (orchids, ferns, perching lilies etc) that these trees also host – a whole aerial world.

NICK MILLER (NCMILLER@ORCON.NET.NZ)



ROSA GALICA 'CHARLES DE MILLS'



CHRISTMAS ORCHID

**TELFER MARINE**  
LIMITED

**OUTBOARD  
SALES & SERVICE  
BOAT STORAGE  
LARGE RANGE  
OF CHANDLERY**

**236 TE NGAE ROAD,  
ROTORUA**

**Phone 345 9854  
Fax 345 9857**

**www.telfermarine.co.nz**

**YAMAHA** *Buccaneer*  
*Marco Boats*



**The Happy  
Angler Store**

**S.H.33 Mourea,  
Okawa Bay**

- Fishing Licences
- Ice Creams
- Takeaways
- Chicken and Chips  
& Fish and Chips
- Dairy / Grocery

**Open 7.30 am to 7 pm seven days**

**Phone 07 362 4709**

**Phone ahead for your Food Order**



## ONE OF ROTORUA'S SPECIAL WALKWAYS NOW ACCESSIBLE TO MOUNTAIN BIKERS

The opportunity for mountain biking action on the door step of Lake Rotoiti has just arrived

At the end of September the Department of Conservation (DOC) began a trial which allows mountain bikers' access to the famed Western Okataina Walkway for a two year period. It is a part of efforts by DOC to provide more fantastic recreational opportunities, increasing the amount of users on existing trails and working with the wider community in growing the region.

Offering a 16km (one way) ride, the two-way Okataina track will gain dual usage so riders need to take a 'share with care' approach however the old forestry track's wide, firm passing options and good sight lines should provide a safe option for all users.

The track has three entry points - the Okataina Education Camp and Waipungapunga carpark (both on Okataina Road) and off Millar Road, Lake Okareka. There is comprehensive signage at all entry points explaining trail conditions as well as maps showing each particular area.

DOC ranger - and mountain bike enthusiast - Rob Griffiths has ridden the walkway a number of times. "The ride up to the Whakapoungakau junction is pretty steep and may require some walking. But once up is a great ride with some flowing downhill, stream crossing (take care on these) and awesome views of Lake Rotoiti from the top of the trig"

"The track differs to those found in the Whakarewarewa forest. It is more of a backcountry adventure ride in native forest. Parts of the trail have ruts and some differing gradients. However, if you are up for adventure, enjoy a challenge and are looking for a something



Department of Conservation  
*Te Papa Atawhai*

different then this trail is for you"

The Lake Okataina Scenic Reserve Board has approved the two-year trial period. Throughout that time DOC and the Reserve Board will regularly monitor the track.

[www.doc.govt.nz/rotorua](http://www.doc.govt.nz/rotorua)



PHOTO: NICK LAMBERT

## TE NGAE PHARMACY

YOUR FAMILY HEALTHCARE CENTRE  
SPECIALISING IN:

BABY NEEDS - NUTRITIONAL SUPPLEMENTS  
- PHOTOGRAPHICS - TOILETRIES - GIFTS -  
MEDICINALS - FIRST AID SUPPLIES

EFTPOS AVAILABLE

Te Ngae Shopping Centre  
Te Ngae Road. Rotorua.  
Ph 345 9678. Fax 345 9632

M.C. BHULA Reg.Pharm.NZ

Hours: Mon-Fri: 8.30am - 5.30pm  
Sat: 9.00am - 1.00pm

Celebrating cycling  
8-17 February 2013

ROTORUA  
BIKE  
FESTIVAL



# VOLCANIC ASH



Bearing in mind the latest unrest with both Tongariro and Ruapehu I think it is timely to circulate to everyone some information around volcanic ash and what to do if we should be affected by an eruption. My main advice would be:

- Close doors and windows and place damp towels around them.
- Ash is acidic and coarse and can cause asthma symptoms and irritation to the eyes, so stay indoors to avoid unnecessary exposure.
- Disconnect drainpipes/downspouts from gutters to stop drains clogging (allowing ash and water to empty onto the ground)
- If you need to clear your roof, wear a dust mask, goggles and long sleeves/trousers.
- Be careful – ash is slippery!
- Remove outdoor clothing before entering a building – volcanic ash is a nuisance and gets everywhere in the house or office.
- Prepare for water shortages and power cuts.
- If possible, avoid driving – ash is harmful to vehicles and the roads will be slippery and visibility poor.
- Keep ash out of buildings, machinery, vehicles, downspouts, water supplies and waste water systems as much as possible!

More information can be found on the following websites:

[www.ivhnn.org](http://www.ivhnn.org) • [www.rdc.govt.nz](http://www.rdc.govt.nz) • [www.bopcivildefence.govt.nz](http://www.bopcivildefence.govt.nz)  
[www.civildefence.govt.nz](http://www.civildefence.govt.nz) • or phone me on 07 351 8312.

**PAULINE HITCHCOCK** – ROTORUA EMERGENCY MANAGEMENT COORDINATOR

## NEED AN ELECTRICIAN?

**Dean Bloomfield**  
Electrician

Phone: (07) 362 4909  
Mobile: 027 220 3055  
[info@needanelectrician.co.nz](mailto:info@needanelectrician.co.nz)

1207 SH 33  
RD4, Rotorua  
[www.needanelectrician.co.nz](http://www.needanelectrician.co.nz)



**Green Acres Bay of Plenty  
is owned and operated  
by Max Hughes.**

**The Regional office is located  
at Hauparu Bay Lake Rotoiti  
so they are 'On the spot'**

**Green Acres can help you with:**

**Lawnmowing**

**Section Maintenance**

**Tree and Hedge Trimming**

**Commercial Cleaning**

**Specialists in one off Domestic Cleans**

**Carpet Cleaning**

**So - they 'Cover the Field'**

**Call Max - He would be delighted to  
come to your property,  
give you a free no obligation quote  
for the work you would like done and  
solve your problem.**

**All Green Acres Owner / Operators  
are fully Trained, Insured  
and security checked.**

**Phone 0800 22 09 37**

# LAKE ROTOITI WOODEN AND CLASSIC BOAT ASSOCIATION

## FINAL REPORT FOR 2012

The Annual Fishing Competition was held at Lake Rotoiti on Saturday 20th October. There were very few entries. It was a good day for Commodore Marcus who not only won the competition for the heaviest trout, but his catch scored top in condition factor. The crew of Kereru presented a bag of four good sized fish. The Weigh Master, Brian Stamp, commented that all fish presented were tagged; these tags indicated that the fish had all been released at the same time, and all weighed in around the same weight.

If entries were disappointing, the BBQ was not. Held at the home of Robin and Anne Sinclair, this event was well supported, and enjoyed by around 30 members and families. Thanks to the Sinclair's and Fraser Wilson who was chef for the evening. Fraser's son, Guy, gave a very enlightening chat about his life as a professional Golf Coach, and his long association with Lydia Ko and her family. Lydia is one of New Zealand's rising golf stars, who is enjoying considerable success at home and abroad. This was well received by members.

The Association needs more entries next year to ensure the continued success of this day.

Members of the Association continue to maintain and improve the area

at Wairau Bay. We stage our Annual Parade from here, thanks to the kindness of the Trust Owners, and we urge all members and the general public to respect the privilege.

Members have carried out an inspection of the toilets around the Lake. General maintenance is ongoing.

A Committee Meeting will be held shortly to commence preparation for events in 2013; the main event of the year being the Classic and Wooden Boat Parade on 9th of February. Entries for this will be sought shortly. *Other dates:*

- 2nd January Poker Parade
- 12th January Dingy Day, Wairau Bay

These events are marked on the Assn. Calendar which is now available from Committee Members.

There have been a number of wooden boats introduced to the Lake over the winter months. We would like to welcome the owners and their craft

The Committee extends Seasons Greetings to all. Safe Boating  
**MARCUS WILKINS** | COMMODORE

## FISHING LAKE ROTOITI - SPRING/SUMMER 2012/2013

Changes to spin fishing regulations in an effort to attract more junior anglers to the sport is a positive initiative by Fish and Game. It will be interesting if any noticeable effect on catch rates occurs, particularly in the Autumn traditional fly fishing only areas - Ruato Bay through to the Pipe.

From 1st October 2012 to 31st March 2013, the complete shoreline of Lake Rotoiti (except for 300M around the Ohau Channel Delta landmark pole) is open to spin fishing.

Late March 2012 produced early and outstanding catch results for shore-based fly fishermen, so 'spinners' should get a few weeks action before these 'hot spots' revert to fly fishing only on 1st April 2013.

Fish and Game have altered Lake Rotoiti's Spring liberations; instead of releasing all fish in September, they are now staggered from September through to December.

With higher Summer water temperatures and greater smelt numbers, growth rates will improve and this should reflect in catch results in the

future.

Smelt, the main food source for Rainbow trout, usually spawn in Autumn and Spring, however research into Lake Rotoiti spawning patterns are so far inconclusive regarding the Autumn spawn.

Currently there are large numbers of smelt predominately adjacent to beaches with sand and shingle, the perfect habitat for spawning smelt. Anglers targeting these areas and structures with early and late harling methods incorporating smelt pattern flies and lures are achieving the best results.

Jigging has been patchy, but as the thermocline develops, smelt move from the shallow areas back into the 20 metre differential.

Catch results will improve, remember to experiment throughout the water column and target structures holding smelt.

FOR PROFESSIONAL ADVICE AND CHARTER OR GUIDING SERVICES  
CONTACT: GLENN SKINNER | THE TROUT CONNECTION PH 0273 232 336



### Rotoiti's Specialist Charter Fishing Service

- Boat – Jigging, Harling, Trolling (Your boat or ours)
  - Fly Fishing – local and wilderness adventures by helicopter and 4x4
  - Professional Instruction
  - Advice on equipment/boat set up
  - Gift vouchers available for special events, birthdays etc
  - Satisfaction Guaranteed
- Phone: 027 3232 336**





Hi Flo Pumps & Irrigation Ltd.  
72 Old Taupo Road  
PO Box 548  
Rotorua, New Zealand

Phone: 07 348 7516  
Fax: 07 347 1609

GRUNDFOS  master dealer

# Hello neighbour.

Bachcare is New Zealand's leading full service holiday home rental and management company. Contact us and let Bachcare take care of the details.



0800 42 22 42 . bachcare.co.nz

## LAKE MAINTENANCE

**NOEL & SUZANNE RUEBE | OKERE FALLS**

Lawns | gardens | rubbish removed | trees cut  
property security | pump maintenance | painting  
tractor work | soil & metal cartage

Phone Noel 027-494-8730,  
Suzanne 021-072-1241,  
Glen 021-139-8860  
PO Box 495 Rotorua

## Rudolph Painters



Painting  
Wallpapering  
Spray Painting  
Interior  
Exterior  
Water Blasting  
Commercial

Call William for a Free Quote  
Ph/Mobile 027 441 9769  
A/Hs 07 362 4403

### OKERE CHIPPER SERVICES

#### WE CAN:

CUT YOUR TREES AND CHIP THEM  
CUT AND SPLIT YOUR FIRE WOOD  
SUPPLY ORGANIC MULCH FOR YOUR GARDEN  
REMOVAL OF RUBBISH



**NO JOB TOO BIG OR TOO SMALL**

**CONTACT GLENN - 021 139 8860 MOB**  
**OR**  
**NOEL 3624 813 AFTER HOURS**  
**0274 948 730**

## Lakeside Properties

**Buying or Selling contact:**

**Steve Howard & Lisa Crowe**



## Professionals

mcDowell real estate ltd MREINZ  
licensed real estate agent



**Steve Howard - m 021 722 408**



**Lisa Crowe - m 0274 961 935**

**In times of uncertainty call the Lakes Team for good advice and local knowledge.**

*Providing the Very Best Service in Selling  
Residential Lake Properties.*

[www.lakesideproperties.co.nz](http://www.lakesideproperties.co.nz)



## TURKEY STUFFING

- Add the following to packet stuffing and whizz in a blender:
- 2 rashers bacon
- 2 cloves garlic
- 1/2 cup toasted hazelnuts (toast in dry pan carefully, rub in a tea towel to remove skins)
- 150g soft butter
- handfull dried cranberries
- zest of an orange
- 1 tablespoon finely chopped parsley
- 1 teaspoon wholegrain mustard
- dampen with white wine - drink the rest of the bottle!!!

## TURKEY SAUCE

- 325g cranberry jelly
- 1/2 cup of orange juice
- 1/2 cup port
- 2 spring onions finely sliced
- 1 tablespoon sugar
- 1 tablespoon balsamic vinegar
- heat while stirring, simmer briefly to thicken

## XMAS HAM GLAZES (DOT HAM WITH CLOVES)

### MAPLE & BOURBON GLAZE

- 1/2 cup Chelsea Maple flavoured syrup
- 2-3 tablespoons Bourbon(Whiskey or brandy)
- 2 teaspoons orange zest
- 1 cup soft brown sugar
- combine and stir until over mild heat until sugar is dissolved.

### MARMALADE GLAZE

- 1/2 cup Orange marmalade
- juice of an orange
- 1/2 cup brown sugar
- 2 tablespoons of port or sherry

## 5 MINUTE CHOCOLATE MUG CAKE

- 4 tablespoons flour
- 4 tablespoons sugar
- 2 tablespoons cocoa
- 1 egg
- 3 tablespoons of milk
- 3 tablespoons of oil
- 3 tablespoons chocolate chips(optional)
- splash vanilla essence
- 1 large coffee mug
- Add dry ingredients to mug, mix well, add egg, mix again. Add milk and oil, mix, add chocolate chips (if using) and vanilla, mix. Cook in microwave on high (1000W) for 3 minutes
- Cake will rise over the top of the mug, don't be alarmed - just enjoy!

# WEST ROTOITI CARE GROUP

The only recent communal activity of the group was held on Saturday 24th November.

There was a good turnout of helpers who trimmed,sprayed, dug out major weeds, gorse and broom, and released plants and trees from honeysuckle, and convolvulus.

The area around the Control Gates received attention also. This area has a large amount of use, and I would like to encourage all residents who use this route to and from the Okere Store to help keep it tidy.

I was most encouraged recently when I approached one of the kayakers for help in maintaining this area and I got an instant response. Within a couple of hours two of these young men were mowing and trimming. Thank you. We need more young helpers to take a pride in this area, especially when the World Rafting Championships are going to be held in New Zealand next year.

We, the volunteers in this area, are, in the main, not exactly young and would welcome more help from those in the community who are young and athletic. My thanks to the loyal band of helpers who constitute the West Rotoiti Care Group. For those who would like to help or to know more please phone Jan on 3624976.

No definite dates for 2013 yet, but will endeavour to have 4 work days a year so we can keep on top of the invasive weeds which seem to grow in inaccessible places down banks. etc. Again, thanks to those who quietly go about keeping their own and common areas tidy and attractive.



**Anglican Church in Aotearoa,  
New Zealand and Polynesia**

## TE NGAE PASTORATE SERVICES

**Christmas Services at 9 am  
at St. Mary's and St. Marks**

**St Mary's Anglican Church - MOUREA**

Third Sunday of Every Month - 9.00am

**St Marks Anglican Church - OWHATA**

(Corner Te Ngae Road & Sunrise Avenue)

Every Sunday - 9.00am

Nou Mai Haere Mai - All Welcome

Enquiries to Rev Joe Huta - tel 07 350 1177

## Boat Repairs and Maintenance



**Prevent untimely breakdowns in season**

# GO MOTORS

Competitive rates, high work standards and friendly advice

- Periodic based servicing
- Cooling system inspection
- Water intake filters
- Impeller inspection
- Oil and filter replacement
- Fuel filter replacement
- General repairs and modification

Contact **Stacey Hamblyn** phone number 07 533 1061 or  
027 237 9309 email [gomotornz@gmail.com](mailto:gomotornz@gmail.com)

# IMPORTANT PHONE NUMBERS

Fire, Police, Ambulance, Search & Rescue 111

Accident/Medical Centre 348-1000

Urgent Pharmacy 348-4385

Rotorua Hospital 348-1199

St John Ambulance 0800-426-285

National Poisons Centre 0800-764-766

Rotorua Police Station 348-0099

Neighbourhood Support 349-9470

TrustPower Emergency 0800-878-787

Energy Online Faults 0800-083-285

Environment Pollution Hotline 0800-738-393

S.P.C.A. 349-2955

Dog Control (RDC) 348-4199

Harbour Master (7 day)  
or 07-921-03375  
0800-368-267

Lake Wardens: Mark Farrant 0274-599-006  
Max Hughes 0274-966-759  
Fraser Wilson 0274-965-070

Coastguard 348-9022

Marine Radio 348-7429

Dept. of Conservation 349-7400

M.A.F. 0800-809-966

Fish & Game Eastern 357-5501

Fish & Game Licences 0800-542-362

Poaching 0800-762-244

Environment Bay of Plenty 0800-368-267

Rotorua District Council 348-4199

Rotorua Lakes Community Board 362-4700

Lakes Maintenance 362-4814

Pumps - Hi Flo Pumps 348-7516 (24hrs)

Emery Store 362-7866

Happy Angler Store 362-4709

Okere Falls Store 362-4944

Rotoma General Store 362-0722

Manupirua Springs Hot Pools 345 8070

Electrician - Dean Bloomfield 362 4909  
027 220 305

## REFUSE DISPOSAL

### WEEKLY HOUSEHOLD REFUSE COLLECTION

Only RDC Official Bags will be collected  
Tie bags securely  
Place at kerbside by 8 a.m. on collection day  
Lake Rotoiti Collection day is each MONDAY  
No changes to collection days on Public  
Holidays

### REFUSE & RECYCLING OKERE TRANSFER STATION

Located at Okere Road (just south of SH 33)

Hours: 1 pm - 4.30 pm Wednesday  
10 am - 4.30 pm Sunday  
and last day of every  
public holiday period  
(The Transfer Station is never open  
on Christmas day)

Landfill Fees apply.

Recycling Free of Charge

Domestic Waste only

No Trucks

No Hazardous Waste

For further information call RDC (07) 348-4199

### ROTORUA LANDFILL

Located off Atimuri Highway SH 30

1.6 km from Waipa Junction

Hours: Monday - Saturday  
7.30 am - 4.30 pm  
Sunday and Public Holidays  
9.30 am - 4.30 pm

CLOSED Christmas Day

Landfill Fees Apply

## MARINE RADIO ROTORUA FREQUENCIES

Coastguard Radio conducts four radio  
schedules daily on VHF channel 81

Scheduled times are:-

0745-0800

1130-1145

1530-1545

1800-1815

Channel 81 is the calling frequency  
and closes down at 1830 for this area.

Working frequencies are 06, 08 and  
64. Please use these vessel to vessel.

Visitors to the area are welcome to use  
these services.

Rotorua Lakes Coastguard uses channel  
86 for Search and Rescue. Please avoid  
using this channel.

Frequent visitors are encouraged to  
support this service by joining the  
Rotorua VHF Marine Radio Association.  
Please contact The Secretary at Box  
8000, Western Heights, Rotorua, or  
phone 07 348 2318

## MEDICAL SERVICES

### ACCIDENT & URGENT MEDICAL CENTRE

Cnr Arawa & Tutanekei Streets, Rotorua

Phone 07- 348 1000

Monday - Saturday 8 am- 10 pm.

Sunday 8 am-11.30 pm

### ROTORUA HOSPITAL

Accident & Emergency Department

Off Arawa Street

Phone 07-3481199

(Call 111 for Ambulance Service)

Patient enquiries 07-3497977 (Mon-Fri)

### LAKESCARE (URGENT) PHARMACY

Cnr. Arawa & Tutanekei Streets, Rotorua

Phone 07-348 4385

Open 7 days 8.30 am-9.30 pm

### TE NGAE PHARMACY

Te Ngae Shopping Centre

Phone 07-345 9678

Monday- Friday 8.30 am-5.30 pm

Saturday 9am-1 pm

### DEFIBRILLATOR AT THE FIRE STATION IN OKERE ROAD

### IN A MEDICAL EMERGENCY CALL 111

**AMBULANCE** but also advise the operator of  
the defibrillator on the fire truck. They page  
West Rotoiti Volunteer Fire Unit who could  
be with you a lot faster than an ambulance  
coming from Rotorua.



BETWEEN WATERWAYS

This Newsletter is printed on sustainably  
produced paper FSC Certified (An  
independent, non governmental, not-for-  
profit organization established to promote  
the responsible management of the world's  
forests to meet the social, economic and  
ecological needs of present and future  
generations)

## LRCA CONTACT DETAILS

All written correspondence should be sent to:

The Secretary

LRCA

Postal Delivery Centre

Mourea 3074

Email: lrca@xtra.co.nz

Website: www.rototoiti.co.nz